

Suicide in San Diego County, 2012

Joshua Smith, Ph.D., MPH
Epidemiologist
County of San Diego
Health and Human Services
Emergency Medical Services

Suicides in 2012

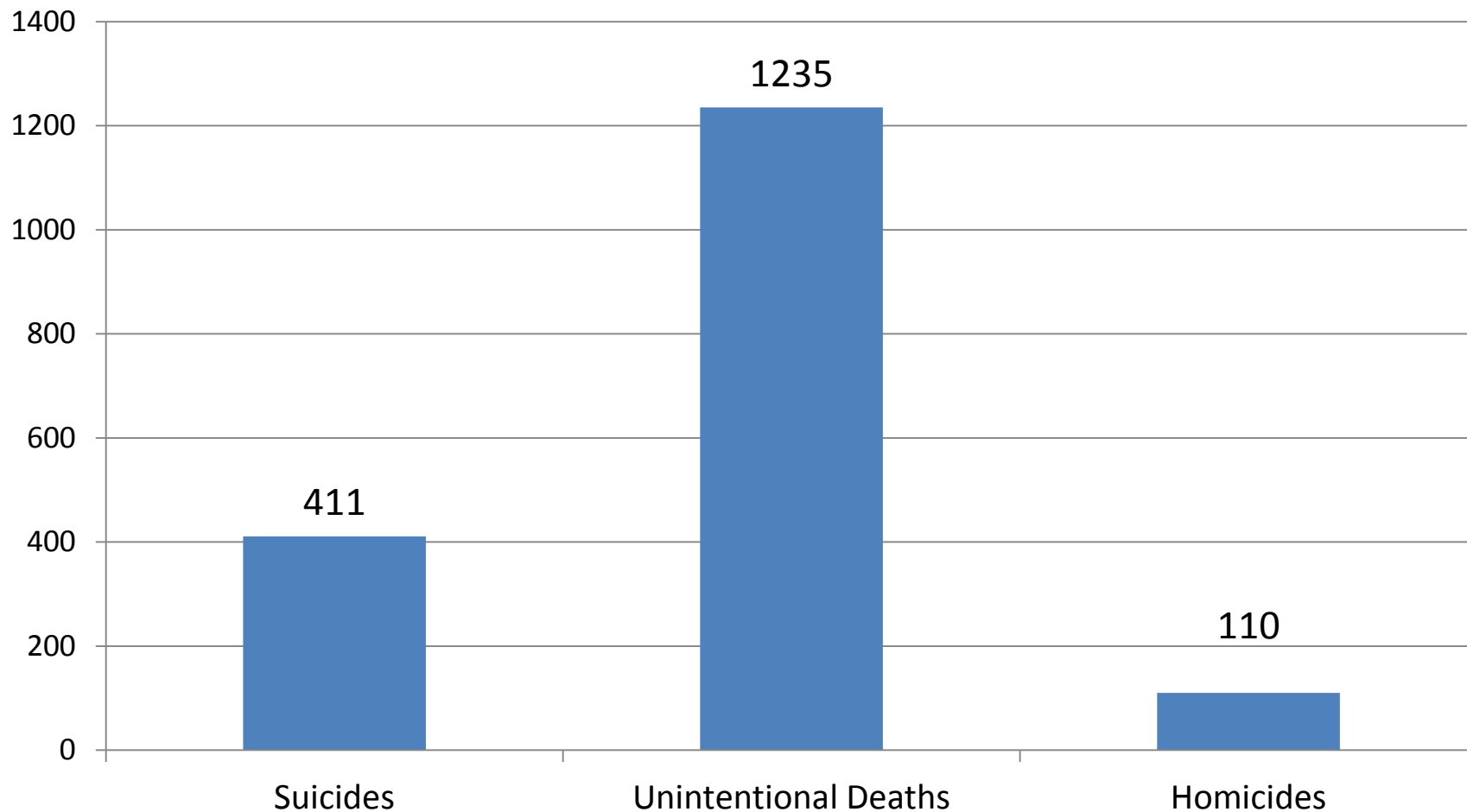
- 411 Suicides – 15.0 per 100,000 (10+ yrs)
 - Highest total suicides in San Diego County History (since we've been keeping track)
 - Highest rate since 1997
 - Gender
 - 307 Males
 - 104 Females
 - Age Range
 - 11 to 103 years

Rates per 100,000 people

Sources: County of San Diego, Health and Human Services Agency, Emergency Medical Services, Medical Examiner Database, 2000 – 2012. Centers for Disease Control and Prevention, National Center for Health Statistics. Compressed Mortality File 1999-2010. CDC WONDER On-line Database. U.S. Census Bureau, 2007-2011 American Community Survey.



Non-natural Deaths, 2012



Sources: County of San Diego, Health and Human Services Agency, Emergency Medical Services, Medical Examiner Database, 2000 – 2012. Centers for Disease Control and Prevention, National Center for Health Statistics. Compressed Mortality File 1999-2010. CDC WONDER On-line Database. U.S. Census Bureau, 2007-2011 American Community Survey.



Suicides by Age Group in 2012

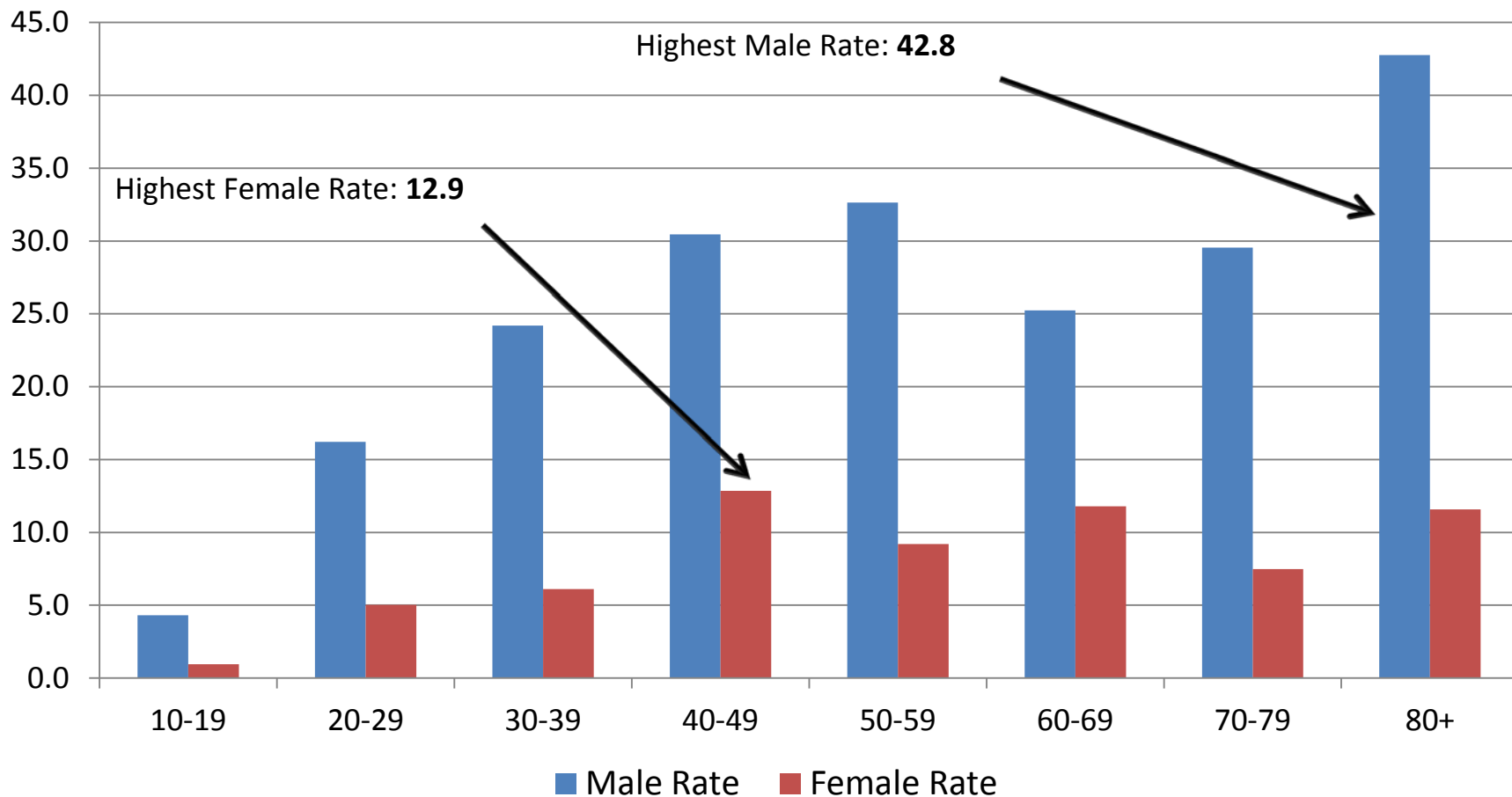
Age Group	Male	Male Rate	Female	Female Rate	Total	Total Rate
10-19	10	4.3	*	*	*	2.7
20-29	44	16.2	12	5.0	56	11.0
30-39	53	24.2	13	6.1	66	15.3
40-49	64	30.5	27	12.9	91	21.7
50-59	65	32.6	19	9.2	84	20.7
60-69	33	25.2	17	11.8	50	18.2
70-79	19	29.6	6	7.5	25	17.3
80+	19	42.8	8	11.6	27	23.8

Rates per 100,000 people

Sources: County of San Diego, Health and Human Services Agency, Emergency Medical Services, Medical Examiner Database, 2000 – 2012. Centers for Disease Control and Prevention, National Center for Health Statistics. Compressed Mortality File 1999-2010. CDC WONDER On-line Database. U.S. Census Bureau, 2007-2011 American Community Survey.



Suicides by Age Group and Gender



Rates per 100,000 people

Sources: County of San Diego, Health and Human Services Agency, Emergency Medical Services, Medical Examiner Database, 2000 – 2012. Centers for Disease Control and Prevention, National Center for Health Statistics. Compressed Mortality File 1999-2010. CDC WONDER On-line Database. U.S. Census Bureau, 2007-2011 American Community Survey.



Suicides by Race in 2012

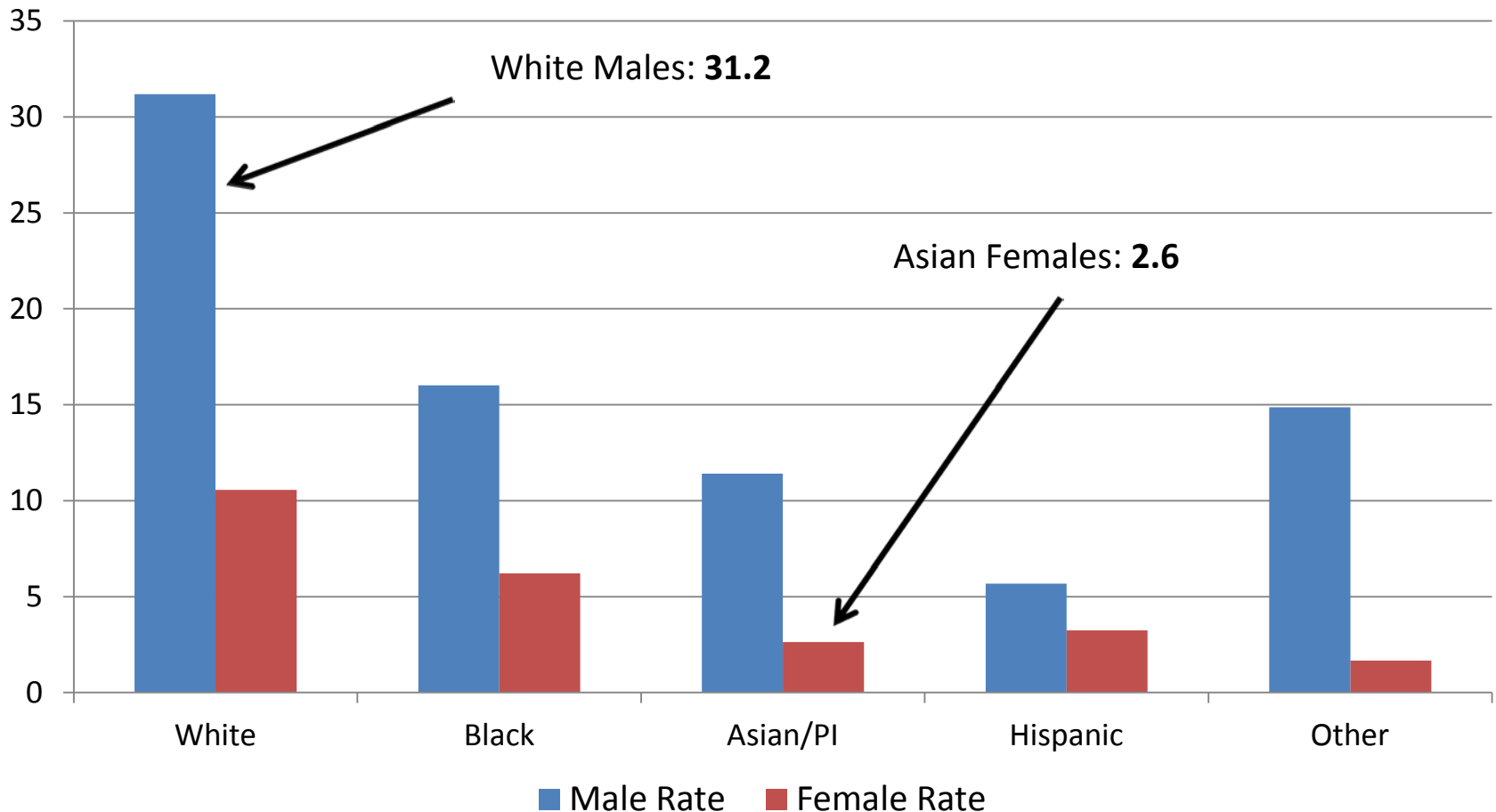
Race/ Ethnicity	Male	Male Rate	Female	Female Rate	Total	Total Rate
White	238	31.2	77	10.6	315	21.1
Black	12	16.0	*	*	16	11.5
Asian/PI	19	11.4	5	2.6	24	6.7
Hispanic	29	5.7	17	3.2	46	4.4
Other	9	14.9	*	*	10	8.3

Rates per 100,000 people

Sources: County of San Diego, Health and Human Services Agency, Emergency Medical Services, Medical Examiner Database, 2000 – 2012. Centers for Disease Control and Prevention, National Center for Health Statistics. Compressed Mortality File 1999-2010. CDC WONDER On-line Database. U.S. Census Bureau, 2007-2011 American Community Survey.



Suicides by Race and Gender

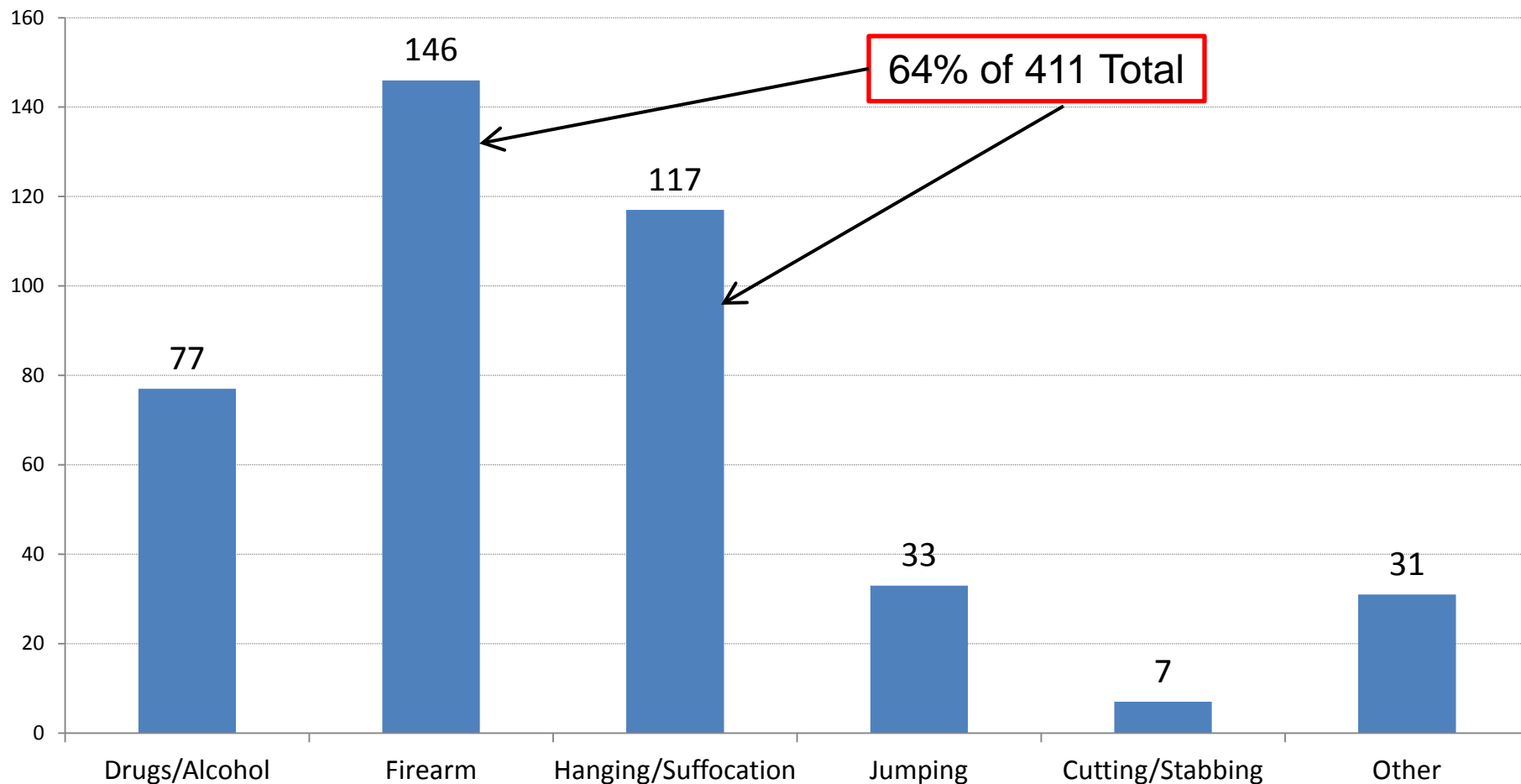


Rates per 100,000 people

Sources: County of San Diego, Health and Human Services Agency, Emergency Medical Services, Medical Examiner Database, 2000 – 2012. Centers for Disease Control and Prevention, National Center for Health Statistics. Compressed Mortality File 1999-2010. CDC WONDER On-line Database. U.S. Census Bureau, 2007-2011 American Community Survey.



Suicides by Mechanism



Sources: County of San Diego, Health and Human Services Agency, Emergency Medical Services, Medical Examiner Database, 2000 – 2012. Centers for Disease Control and Prevention, National Center for Health Statistics. Compressed Mortality File 1999-2010. CDC WONDER On-line Database. U.S. Census Bureau, 2007-2011 American Community Survey.



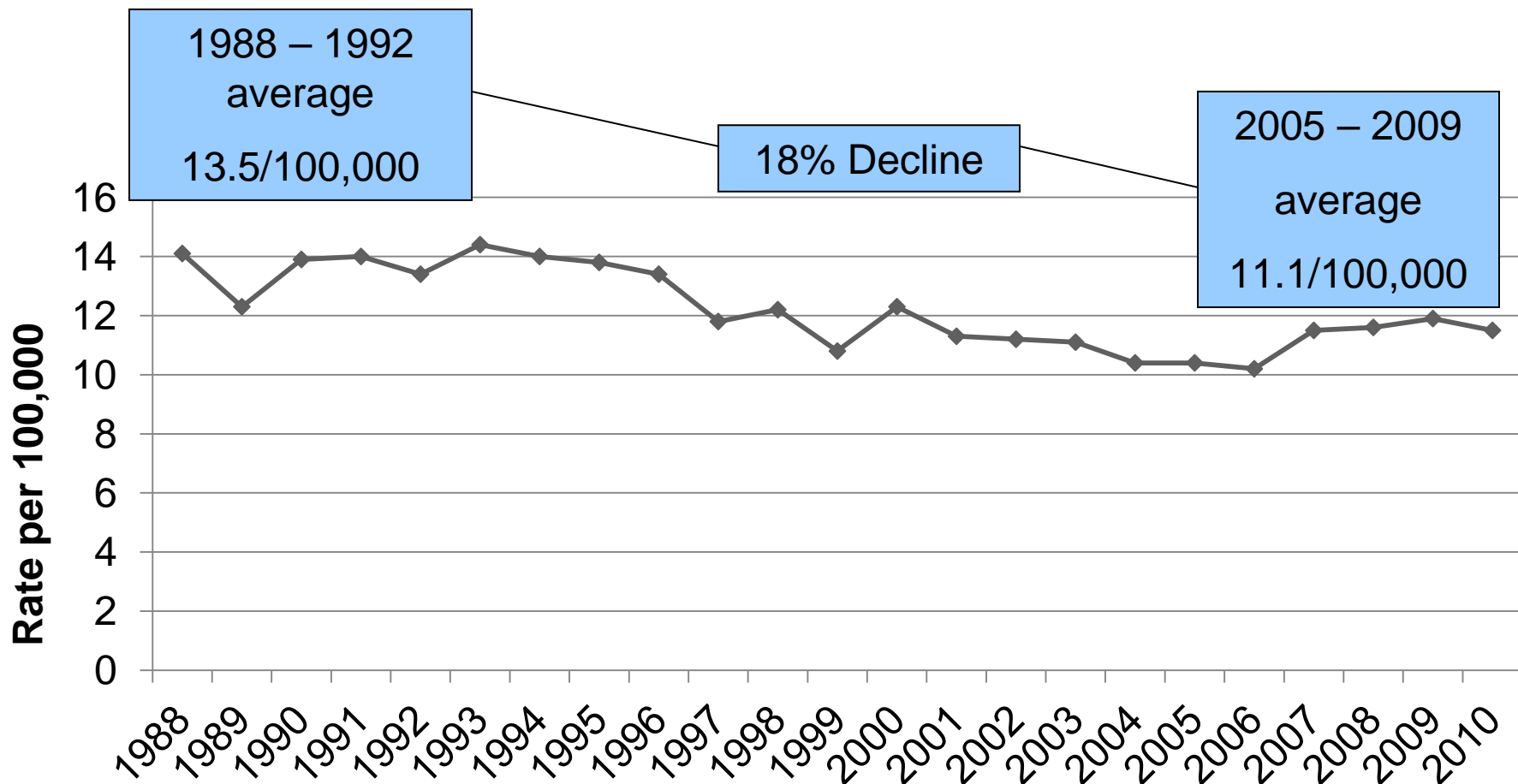
Suicide in San Diego County

TRENDS OVER TIME

Sources: County of San Diego, Health and Human Services Agency, Emergency Medical Services, Medical Examiner Database, 2000 – 2012. Centers for Disease Control and Prevention, National Center for Health Statistics. Compressed Mortality File 1999-2010. CDC WONDER On-line Database. U.S. Census Bureau, 2007-2011 American Community Survey.



Overall Suicide Rate by Year, San Diego County, 1988 - 2010



Sources: County of San Diego, Health and Human Services Agency, Emergency Medical Services, Medical Examiner Database, 2000 – 2012. Centers for Disease Control and Prevention, National Center for Health Statistics. Compressed Mortality File 1999-2010. CDC WONDER On-line Database. U.S. Census Bureau, 2007-2011 American Community Survey.

Rates per 100,000 people



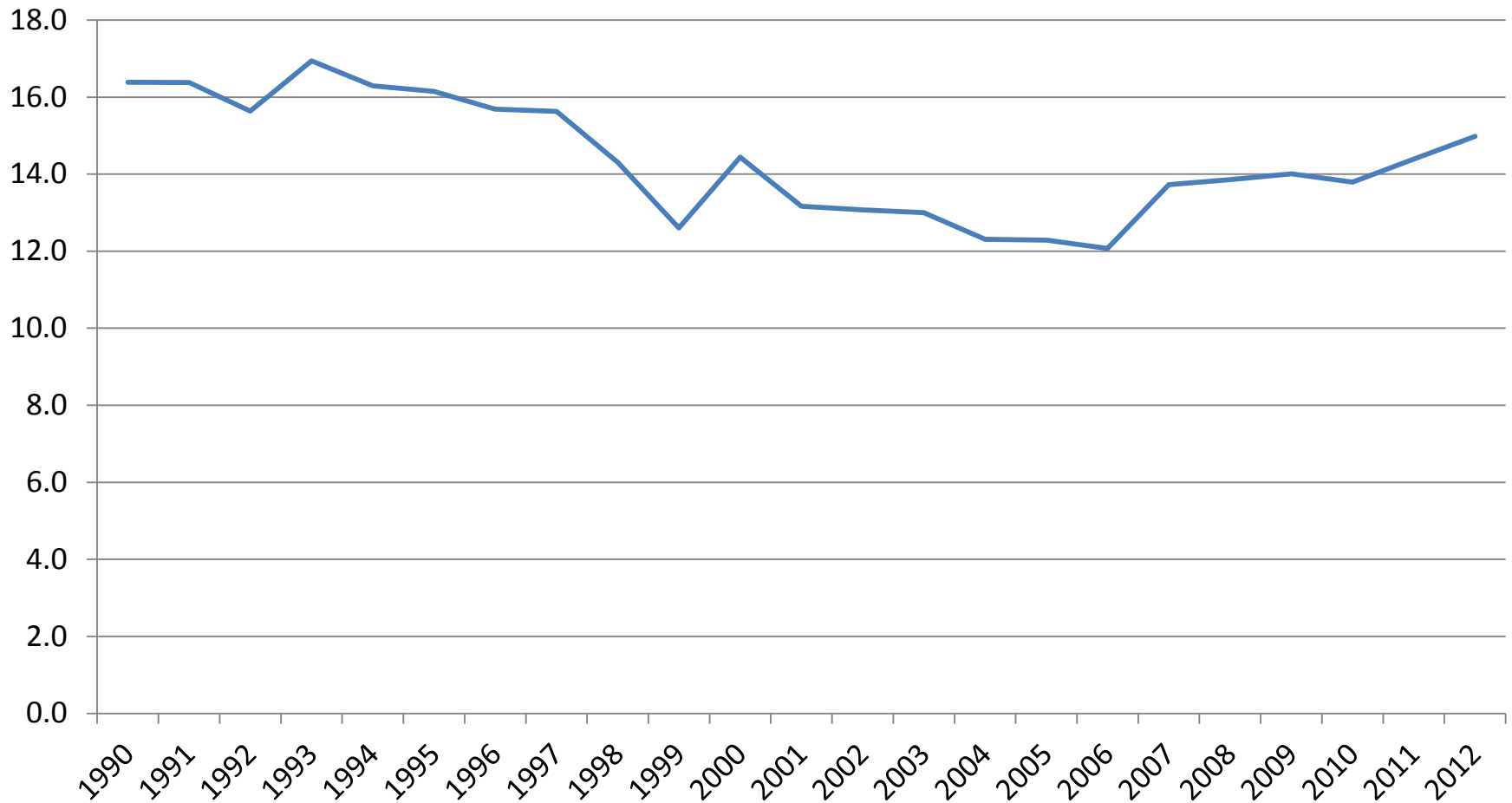
San Diego County Population

- 2010 Projected population: 3,224,432
- 2010 Census population: 3,095,313
- 2001 – 2009 populations revised lower
- 2001 – 2010 Suicide rates revised higher

Sources: County of San Diego, Health and Human Services Agency, Emergency Medical Services, Medical Examiner Database, 2000 – 2012. Centers for Disease Control and Prevention, National Center for Health Statistics. Compressed Mortality File 1999-2010. CDC WONDER On-line Database. U.S. Census Bureau, 2007-2011 American Community Survey.



San Diego County Suicide Rates, 1990 - 2012

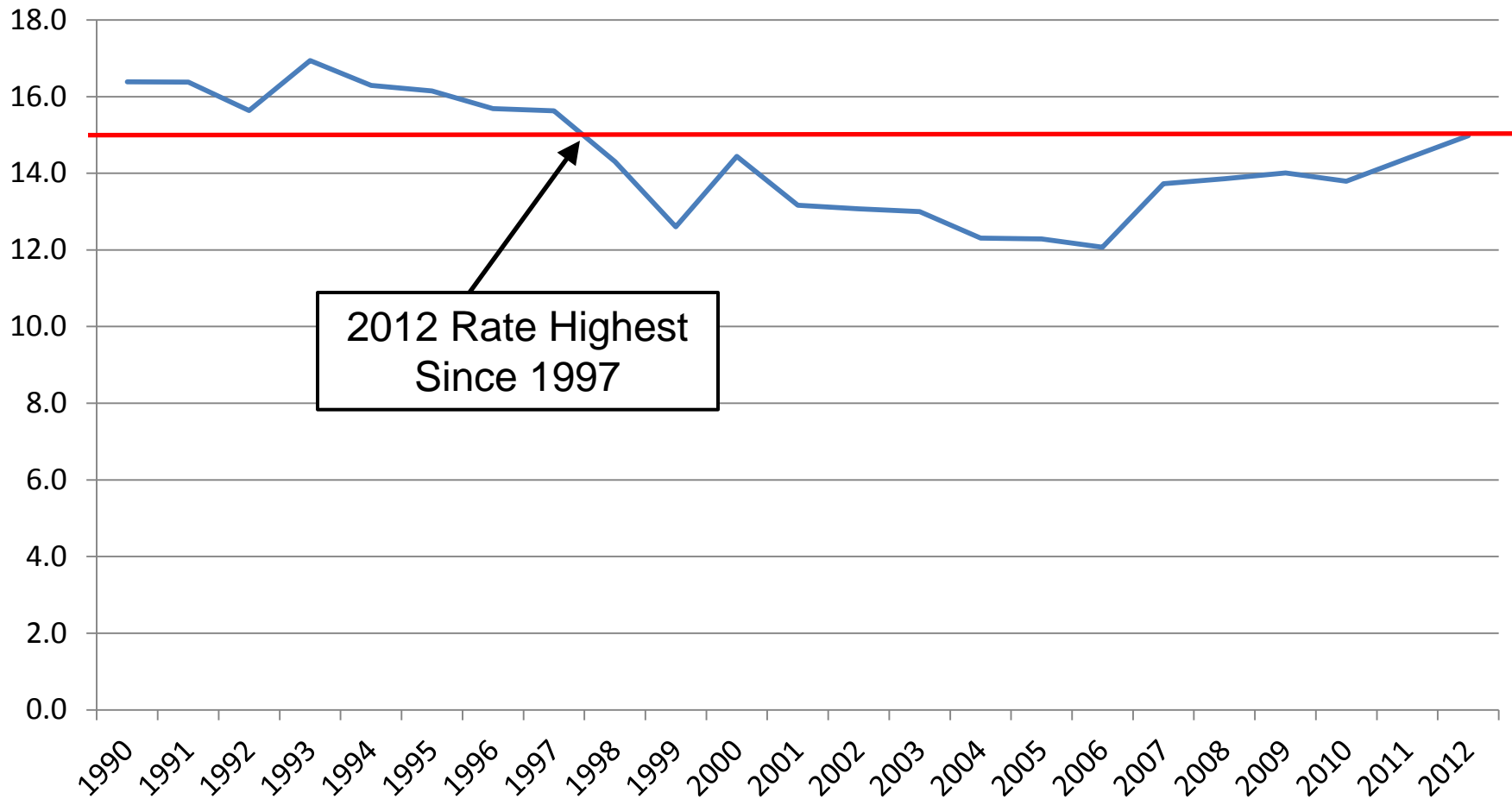


Rates per 100,000 people

Sources: County of San Diego, Health and Human Services Agency, Emergency Medical Services, Medical Examiner Database, 2000 – 2012. Centers for Disease Control and Prevention, National Center for Health Statistics. Compressed Mortality File 1999-2010. CDC WONDER On-line Database. U.S. Census Bureau, 2007-2011 American Community Survey.



San Diego County Suicide Rates, 1990 - 2012

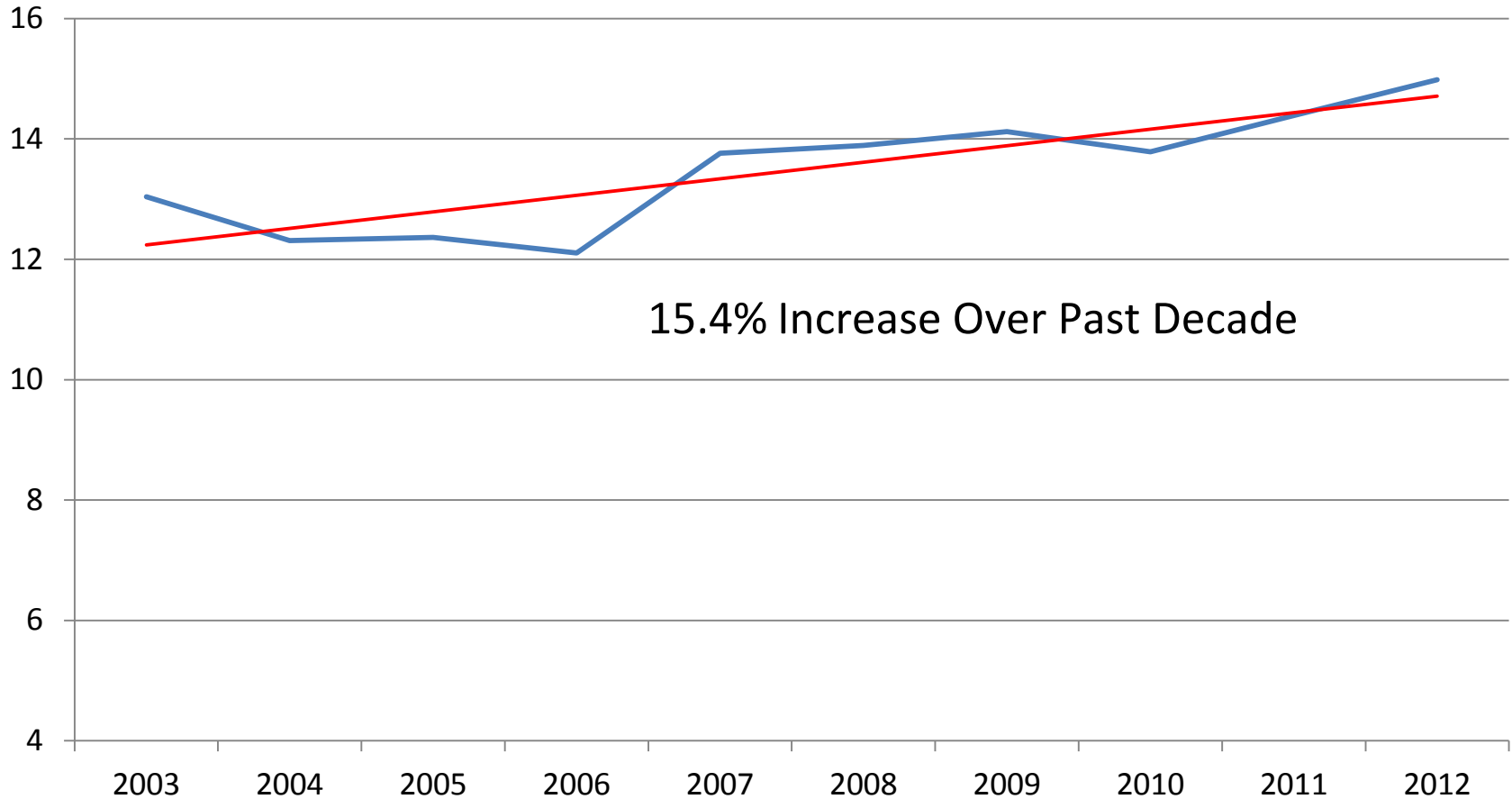


Rates per 100,000 people

Sources: County of San Diego, Health and Human Services Agency, Emergency Medical Services, Medical Examiner Database, 2000 – 2012. Centers for Disease Control and Prevention, National Center for Health Statistics. Compressed Mortality File 1999-2010. CDC WONDER On-line Database. U.S. Census Bureau, 2007-2011 American Community Survey.



San Diego County Suicide Rates, 2003 - 2012

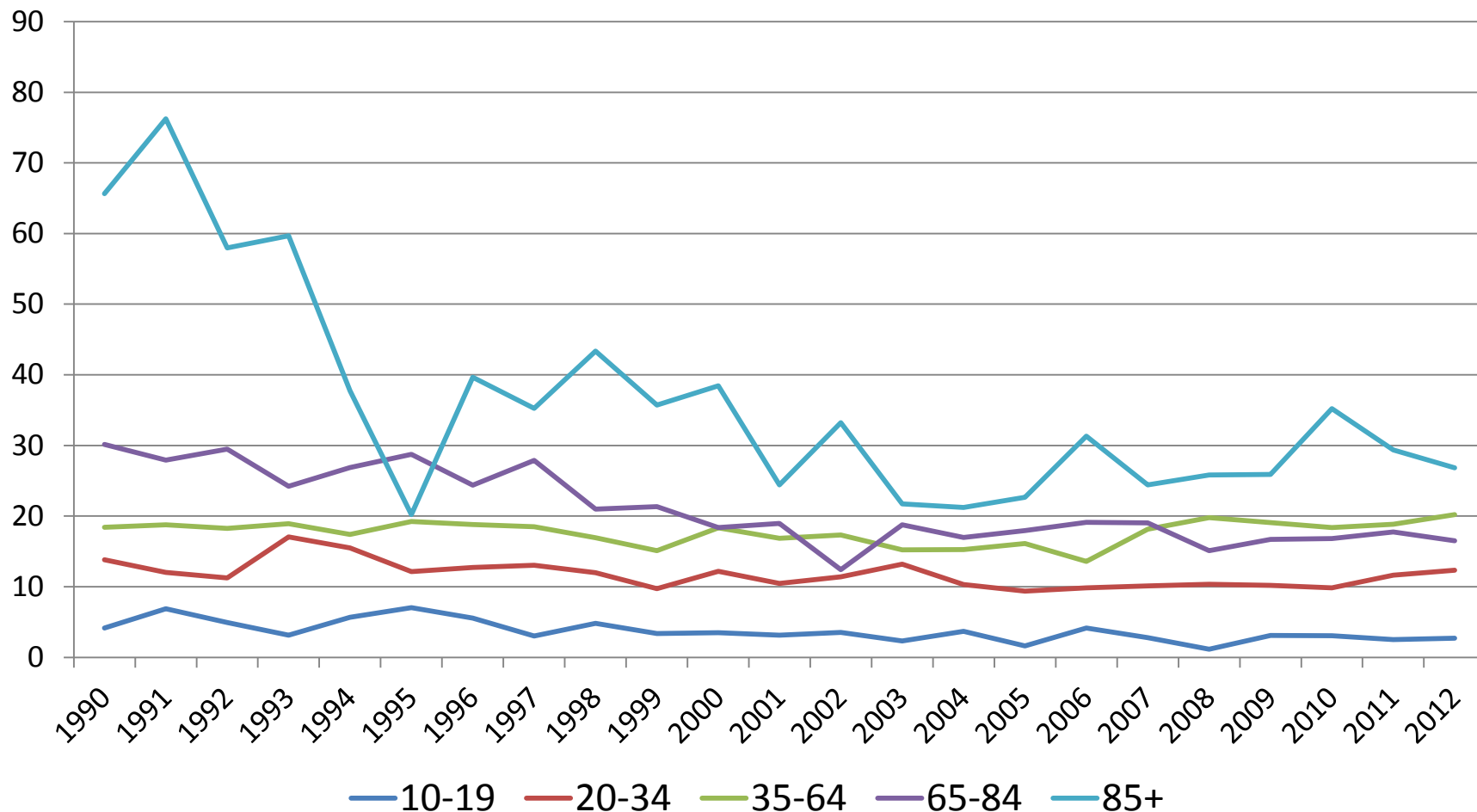


Rates per 100,000 people

Sources: County of San Diego, Health and Human Services Agency, Emergency Medical Services, Medical Examiner Database, 2000 – 2012. Centers for Disease Control and Prevention, National Center for Health Statistics. Compressed Mortality File 1999-2010. CDC WONDER On-line Database. U.S. Census Bureau, 2007-2011 American Community Survey.



Suicide Rates by Age Group

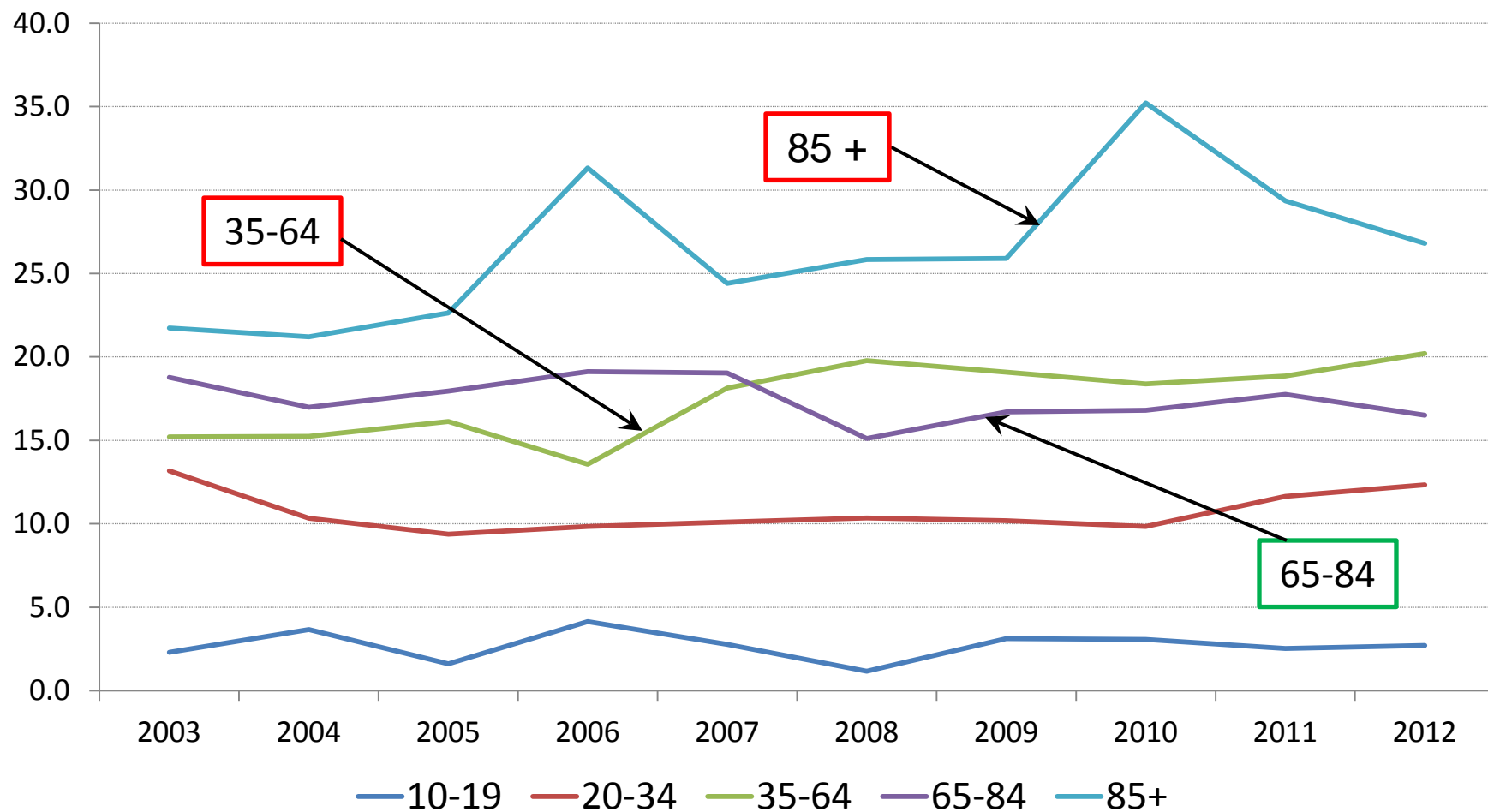


Rates per 100,000 people

Sources: County of San Diego, Health and Human Services Agency, Emergency Medical Services, Medical Examiner Database, 2000 – 2012. Centers for Disease Control and Prevention, National Center for Health Statistics. Compressed Mortality File 1999-2010. CDC WONDER On-line Database. U.S. Census Bureau, 2007-2011 American Community Survey.



Suicide Rates by Age Group



Rates per 100,000 people

Sources: County of San Diego, Health and Human Services Agency, Emergency Medical Services, Medical Examiner Database, 2000 – 2012. Centers for Disease Control and Prevention, National Center for Health Statistics. Compressed Mortality File 1999-2010. CDC WONDER On-line Database. U.S. Census Bureau, 2007-2011 American Community Survey.



San Diego County Suicides, 2008 – 2012 (5-Year Totals)

MARITAL STATUS

Sources: County of San Diego, Health and Human Services Agency, Emergency Medical Services, Medical Examiner Database, 2000 – 2012. Centers for Disease Control and Prevention, National Center for Health Statistics. Compressed Mortality File 1999-2010. CDC WONDER On-line Database. U.S. Census Bureau, 2007-2011 American Community Survey.



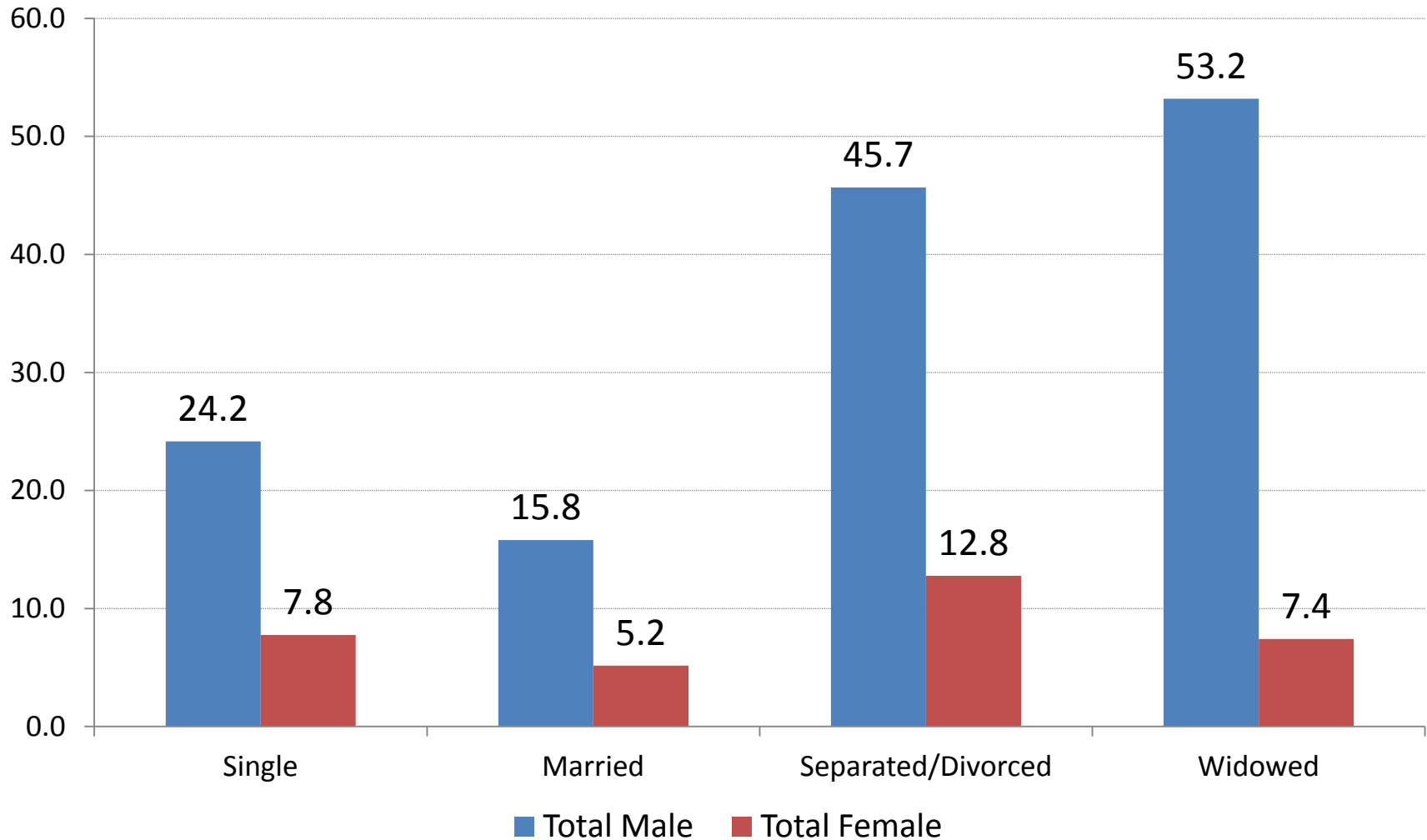
Marital Status

- 5-Year Review (2008 – 2012)
- 1851 Total Suicides
 - 1405 Male Suicides
 - 446 Female Suicides

Sources: County of San Diego, Health and Human Services Agency, Emergency Medical Services, Medical Examiner Database, 2000 – 2012. Centers for Disease Control and Prevention, National Center for Health Statistics. Compressed Mortality File 1999-2010. CDC WONDER On-line Database. U.S. Census Bureau, 2007-2011 American Community Survey.



Total Suicide Rates 15 + Years

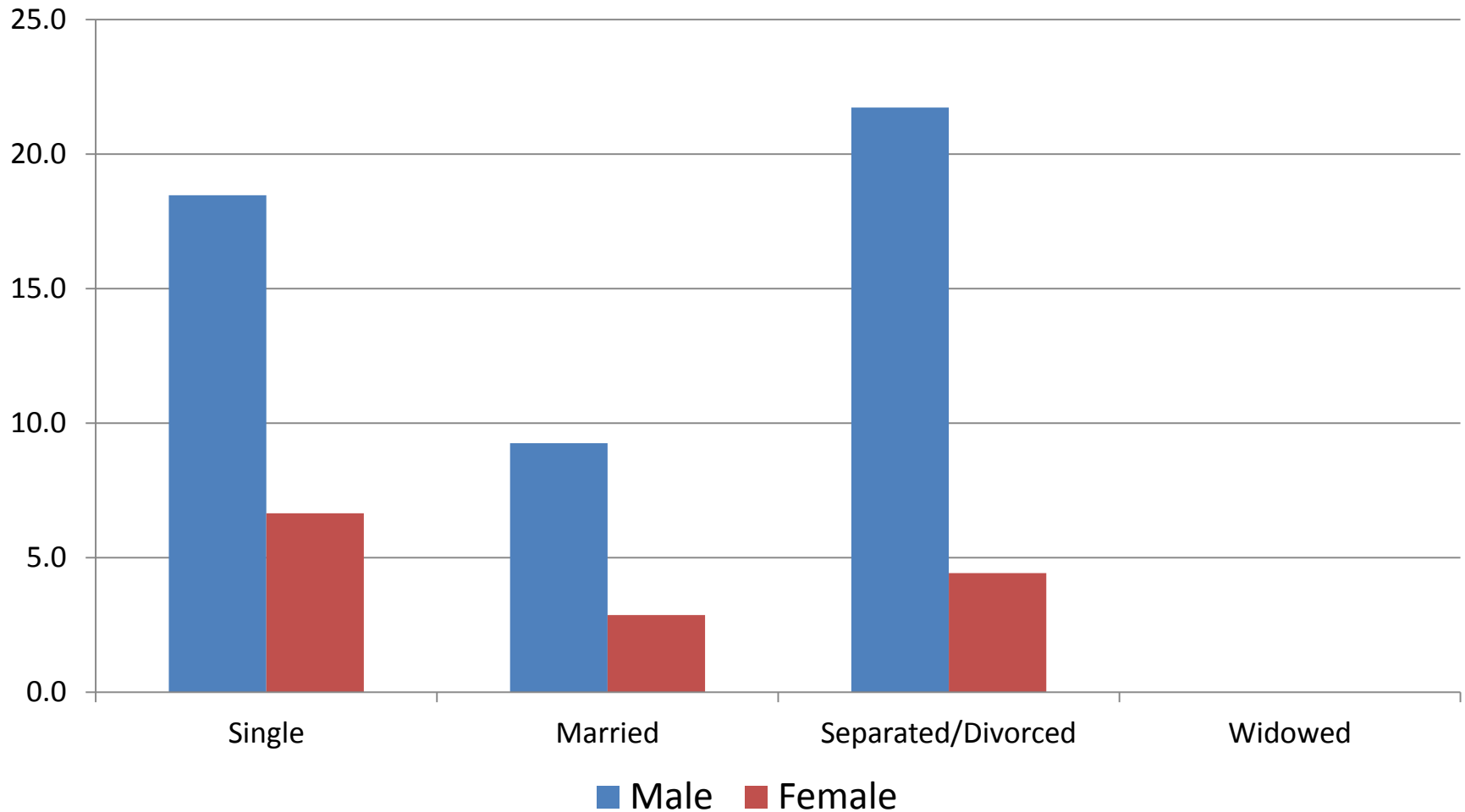


Rates per 100,000 people

Sources: County of San Diego, Health and Human Services Agency, Emergency Medical Services, Medical Examiner Database, 2000 – 2012. Centers for Disease Control and Prevention, National Center for Health Statistics. Compressed Mortality File 1999-2010. CDC WONDER On-line Database. U.S. Census Bureau, 2007-2011 American Community Survey.



20 – 34 Years

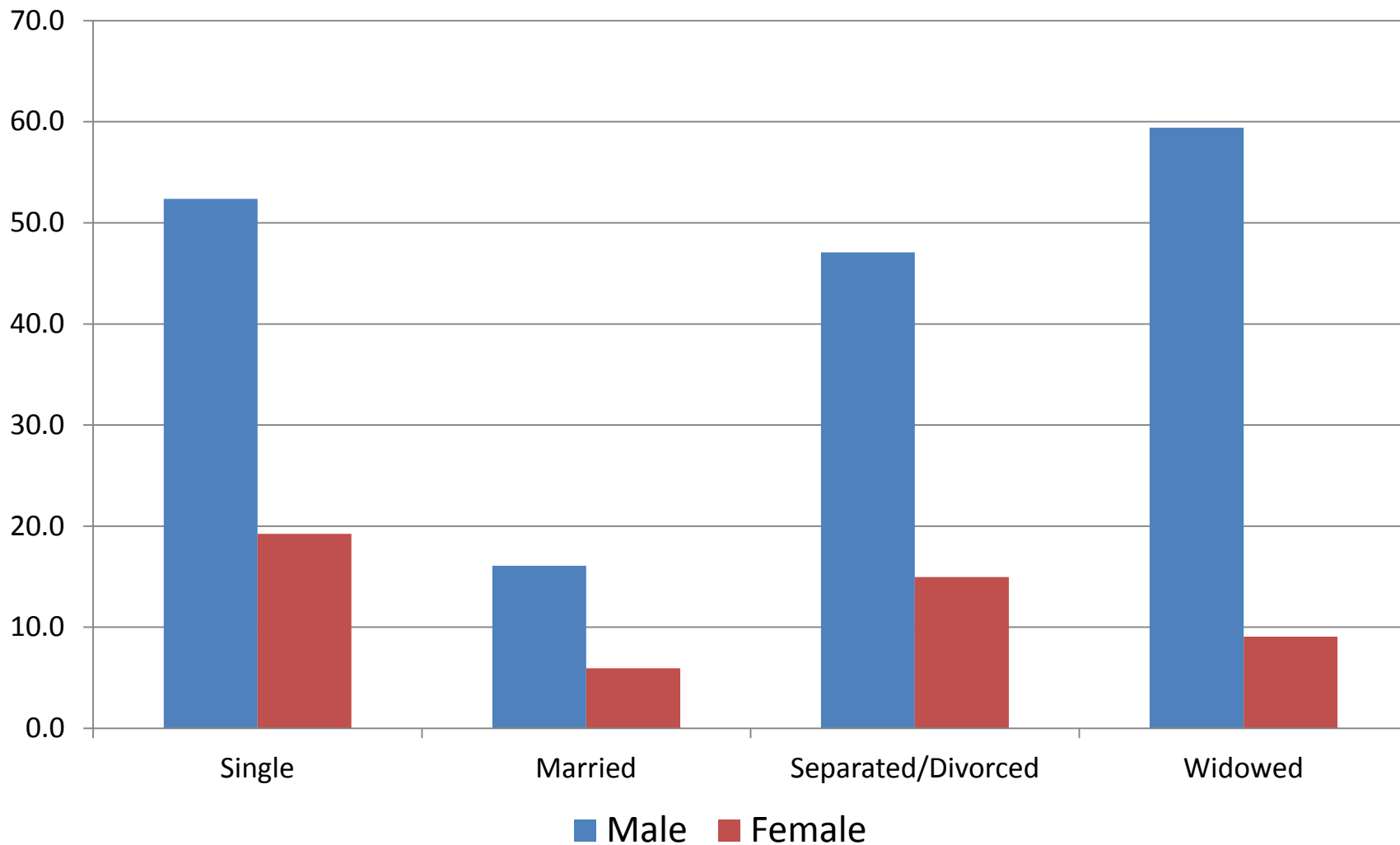


Rates per 100,000 people

Sources: County of San Diego, Health and Human Services Agency, Emergency Medical Services, Medical Examiner Database, 2000 – 2012. Centers for Disease Control and Prevention, National Center for Health Statistics. Compressed Mortality File 1999-2010. CDC WONDER On-line Database. U.S. Census Bureau, 2007-2011 American Community Survey.



35 – 64 Years

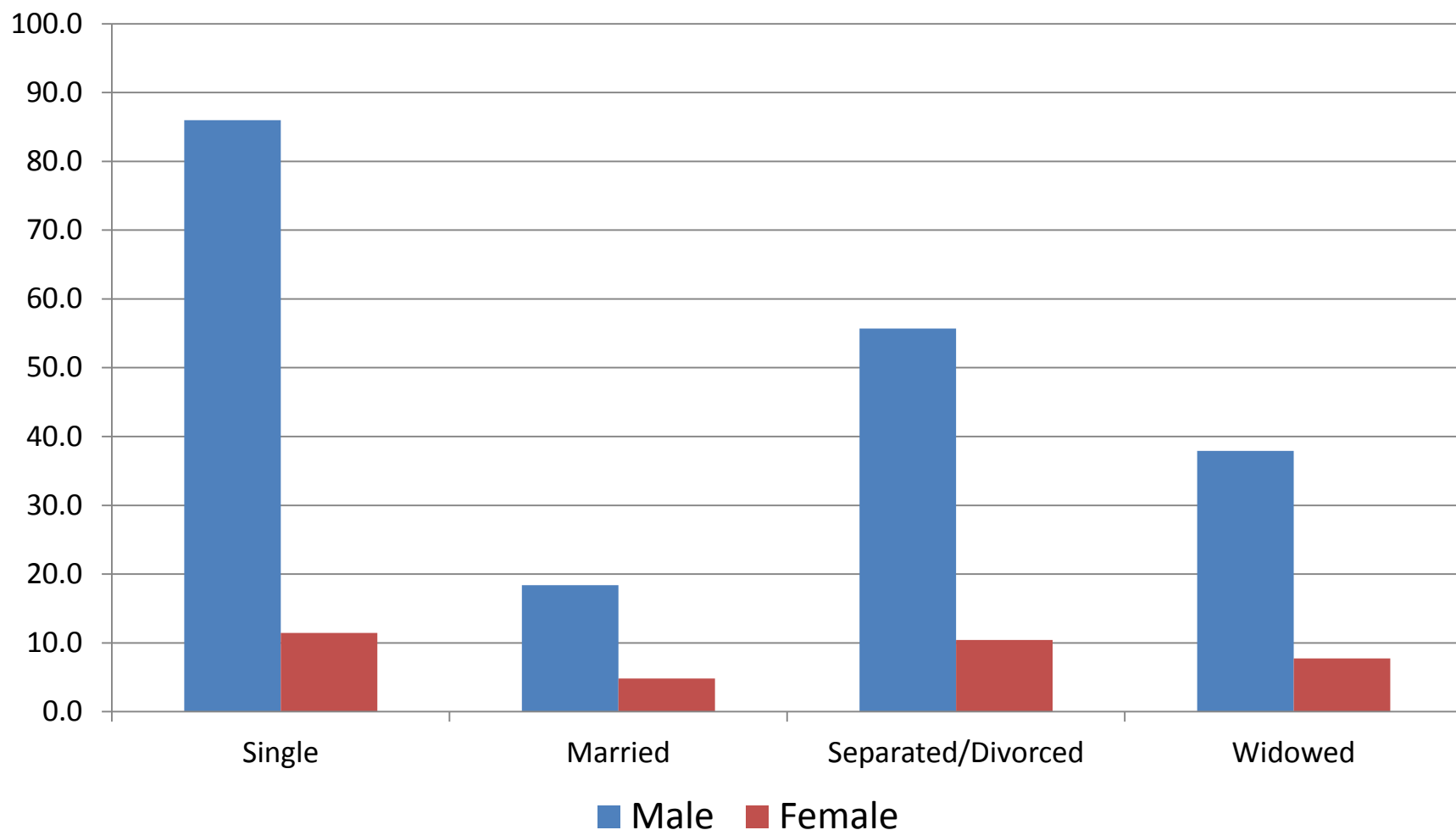


Rates per 100,000 people

Sources: County of San Diego, Health and Human Services Agency, Emergency Medical Services, Medical Examiner Database, 2000 – 2012. Centers for Disease Control and Prevention, National Center for Health Statistics. Compressed Mortality File 1999-2010. CDC WONDER On-line Database. U.S. Census Bureau, 2007-2011 American Community Survey.



65 – 84 Years

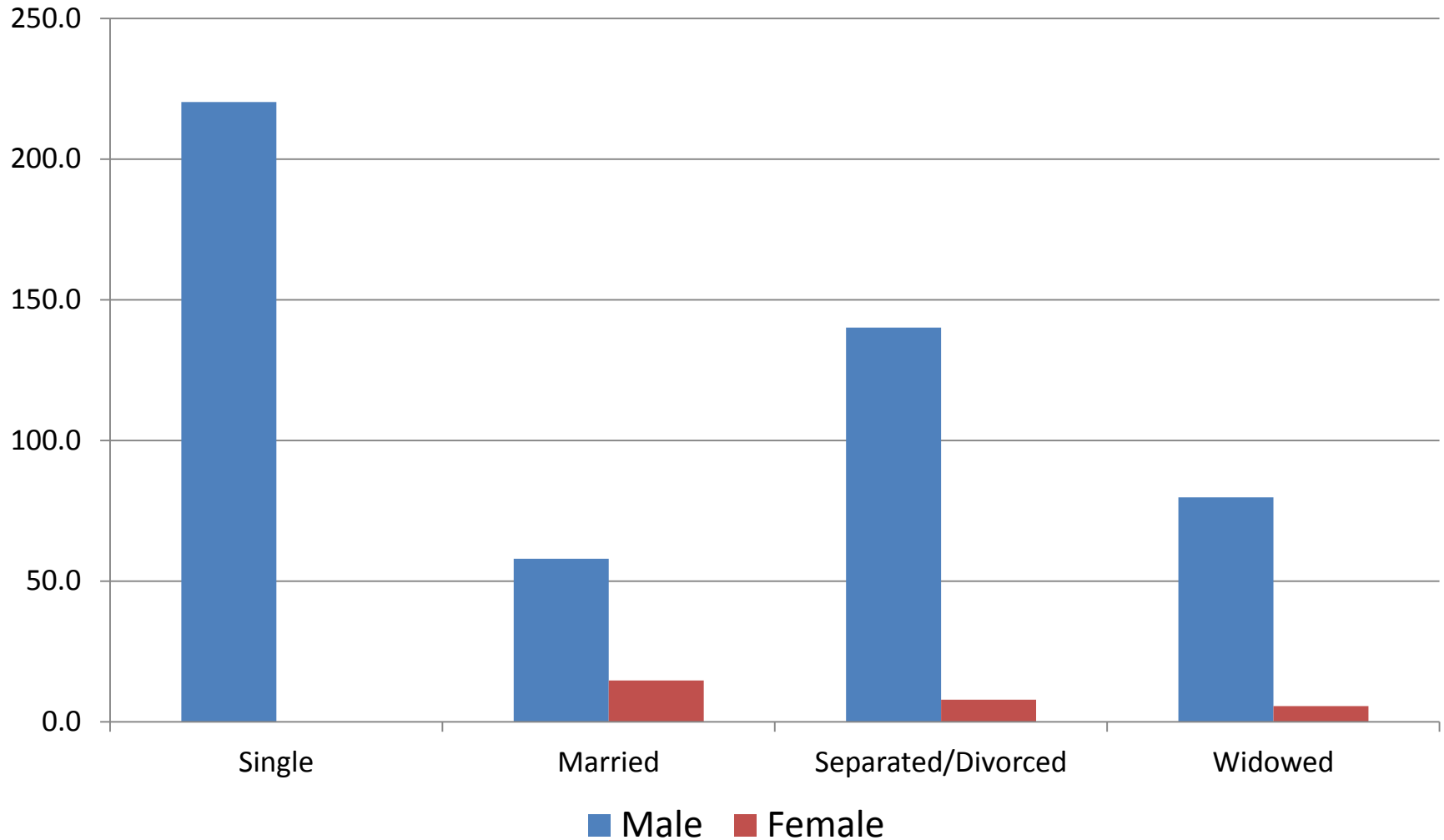


Rates per 100,000 people

Sources: County of San Diego, Health and Human Services Agency, Emergency Medical Services, Medical Examiner Database, 2000 – 2012. Centers for Disease Control and Prevention, National Center for Health Statistics. Compressed Mortality File 1999-2010. CDC WONDER On-line Database. U.S. Census Bureau, 2007-2011 American Community Survey.



85 + Years

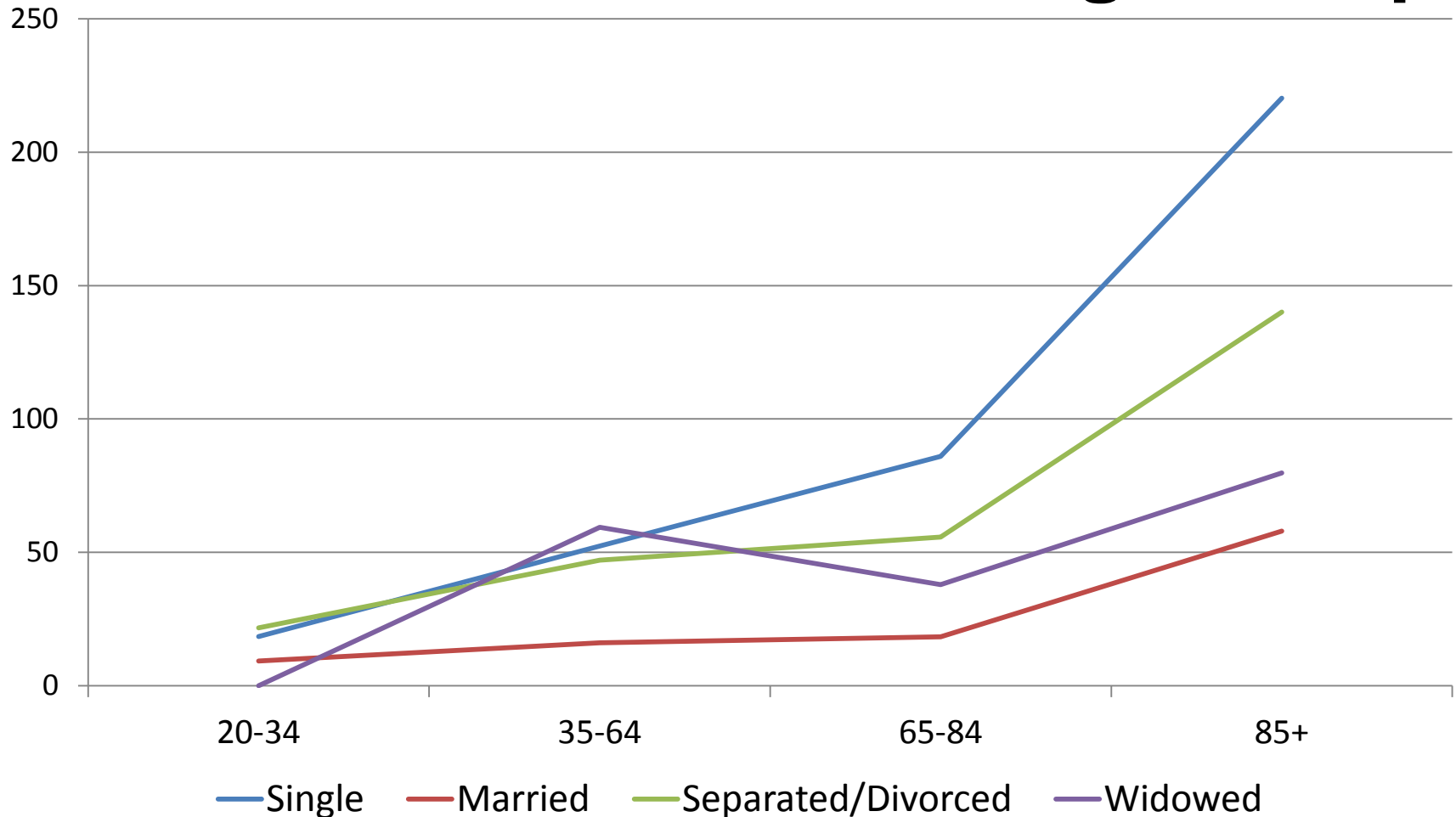


Rates per 100,000 people

Sources: County of San Diego, Health and Human Services Agency, Emergency Medical Services, Medical Examiner Database, 2000 – 2012. Centers for Disease Control and Prevention, National Center for Health Statistics. Compressed Mortality File 1999-2010. CDC WONDER On-line Database. U.S. Census Bureau, 2007-2011 American Community Survey.



Suicide Rates for Males by Marital Status and Age Group

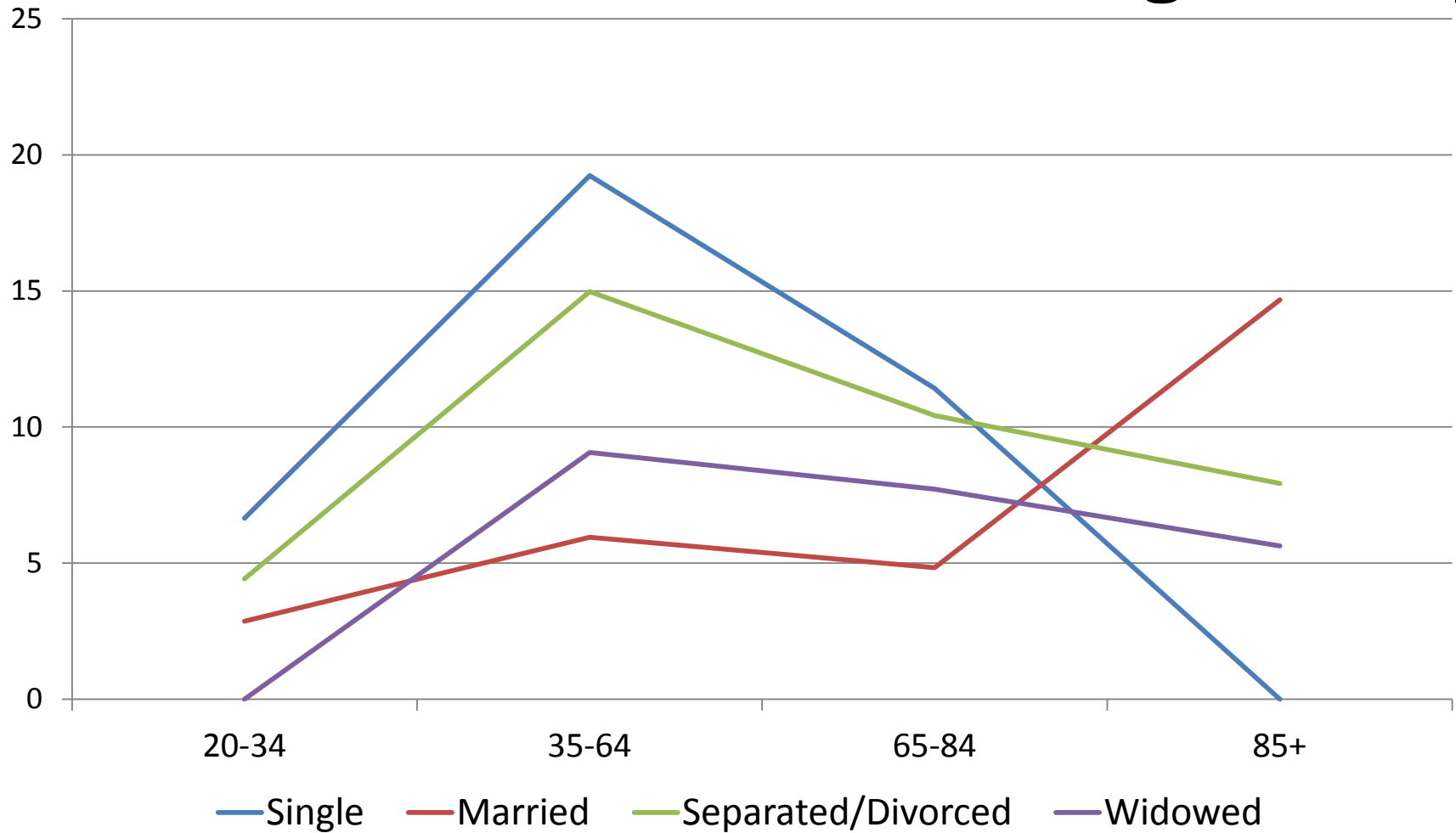


Rates per 100,000 people

Sources: County of San Diego, Health and Human Services Agency, Emergency Medical Services, Medical Examiner Database, 2000 – 2012. Centers for Disease Control and Prevention, National Center for Health Statistics. Compressed Mortality File 1999-2010. CDC WONDER On-line Database. U.S. Census Bureau, 2007-2011 American Community Survey.



Suicide Rates for Females by Marital Status and Age Group



Rates per 100,000 people

Sources: County of San Diego, Health and Human Services Agency, Emergency Medical Services, Medical Examiner Database, 2000 – 2012. Centers for Disease Control and Prevention, National Center for Health Statistics. Compressed Mortality File 1999-2010. CDC WONDER On-line Database. U.S. Census Bureau, 2007-2011 American Community Survey.



Married vs. Unmarried

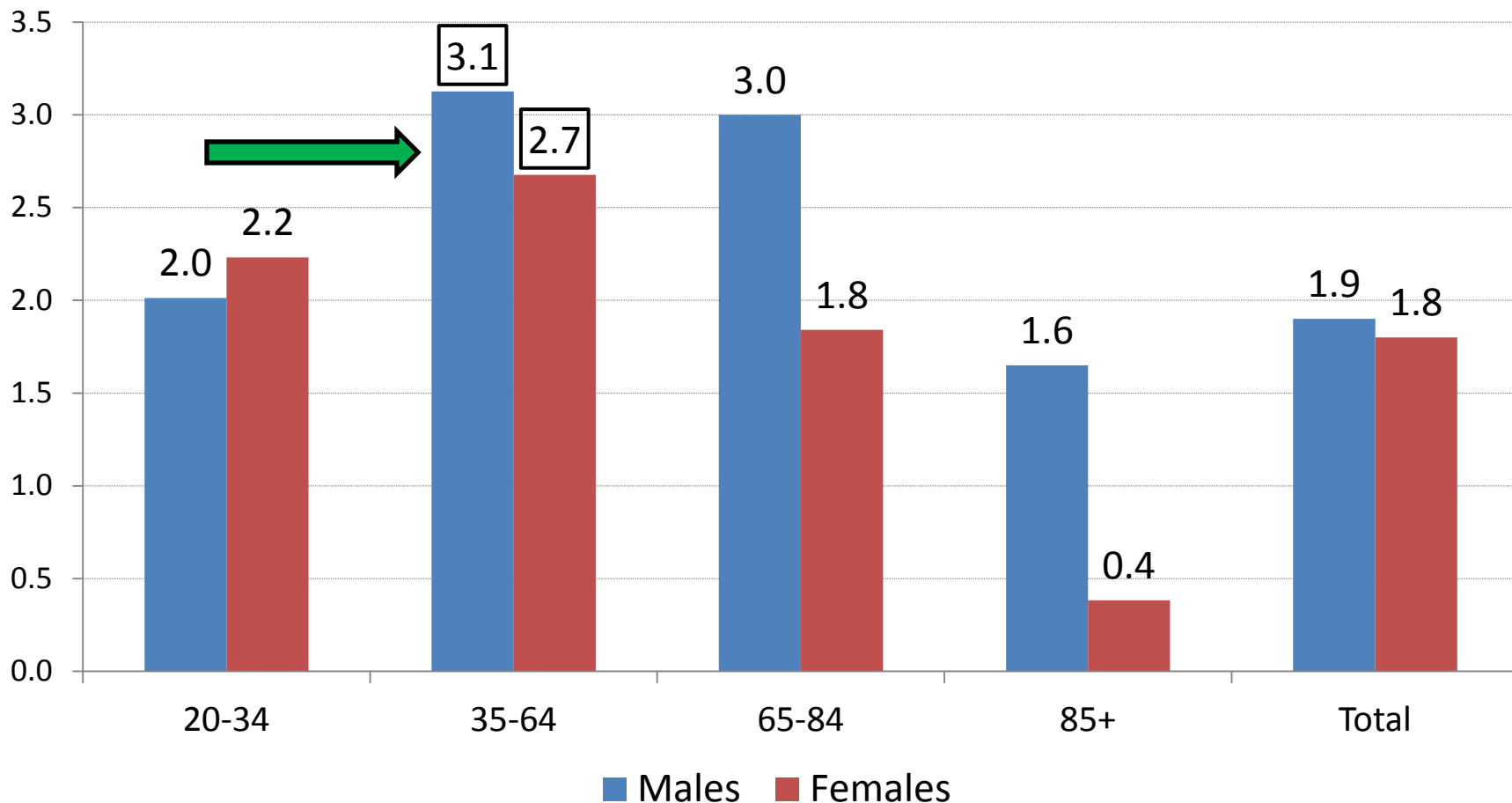
- Unmarried people are twice as likely to commit suicide in San Diego County as married people

(3 times as likely among those 35 – 64 years old)

Sources: County of San Diego, Health and Human Services Agency, Emergency Medical Services, Medical Examiner Database, 2000 – 2012. Centers for Disease Control and Prevention, National Center for Health Statistics. Compressed Mortality File 1999-2010. CDC WONDER On-line Database. U.S. Census Bureau, 2007-2011 American Community Survey.



Protective Effect of Being Married by Age Group



Rates per 100,000 people

Sources: County of San Diego, Health and Human Services Agency, Emergency Medical Services, Medical Examiner Database, 2000 – 2012. Centers for Disease Control and Prevention, National Center for Health Statistics. Compressed Mortality File 1999-2010. CDC WONDER On-line Database. U.S. Census Bureau, 2007-2011 American Community Survey.



SAN DIEGO COUNTY VS NATIONAL RATES

Sources: County of San Diego, Health and Human Services Agency, Emergency Medical Services, Medical Examiner Database, 2000 – 2012. Centers for Disease Control and Prevention, National Center for Health Statistics. Compressed Mortality File 1999-2010. CDC WONDER On-line Database. U.S. Census Bureau, 2007-2011 American Community Survey.



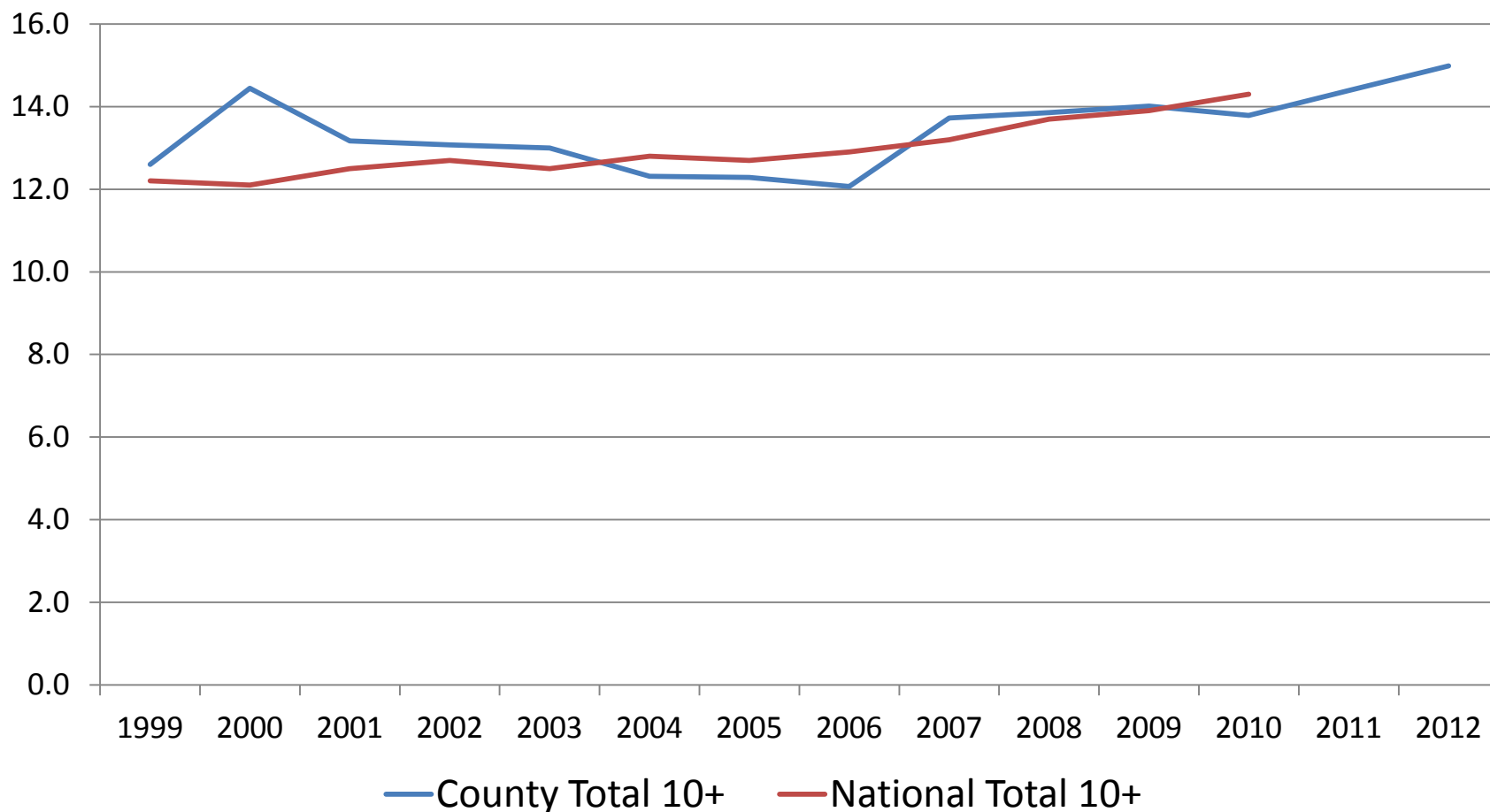
Comparison to National Data

- 12 Years of National Data (1999-2010)
 - 396,423 Total Suicides
- 14 Years of SD County Data (1999-2012)
 - 4,829 Total Suicides

Sources: County of San Diego, Health and Human Services Agency, Emergency Medical Services, Medical Examiner Database, 2000 – 2012. Centers for Disease Control and Prevention, National Center for Health Statistics. Compressed Mortality File 1999-2010. CDC WONDER On-line Database. U.S. Census Bureau, 2007-2011 American Community Survey.



Total 10 years +

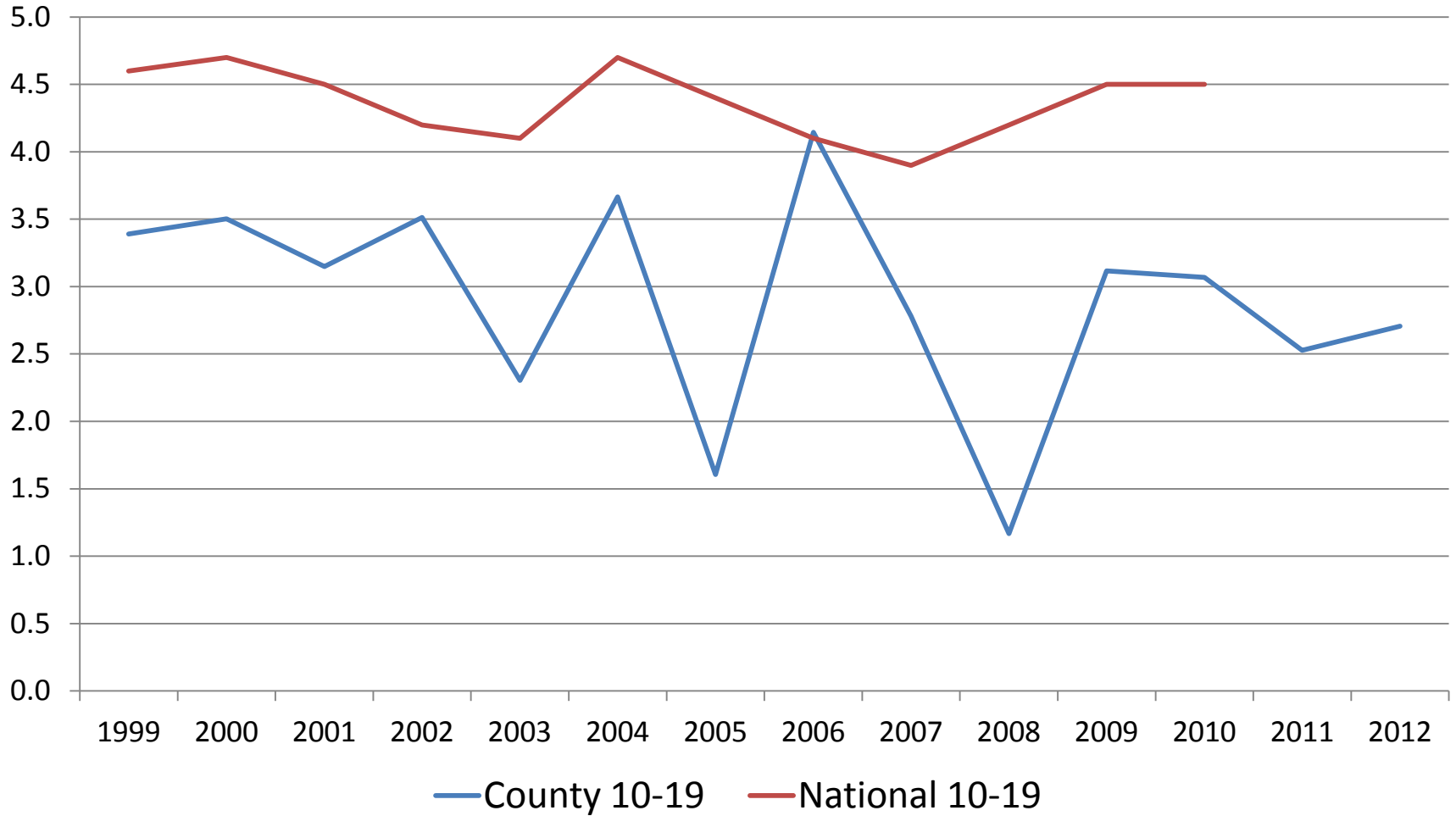


Rates per 100,000 people

Sources: County of San Diego, Health and Human Services Agency, Emergency Medical Services, Medical Examiner Database, 2000 – 2012. Centers for Disease Control and Prevention, National Center for Health Statistics. Compressed Mortality File 1999-2010. CDC WONDER On-line Database. U.S. Census Bureau, 2007-2011 American Community Survey.



10 – 19 Years

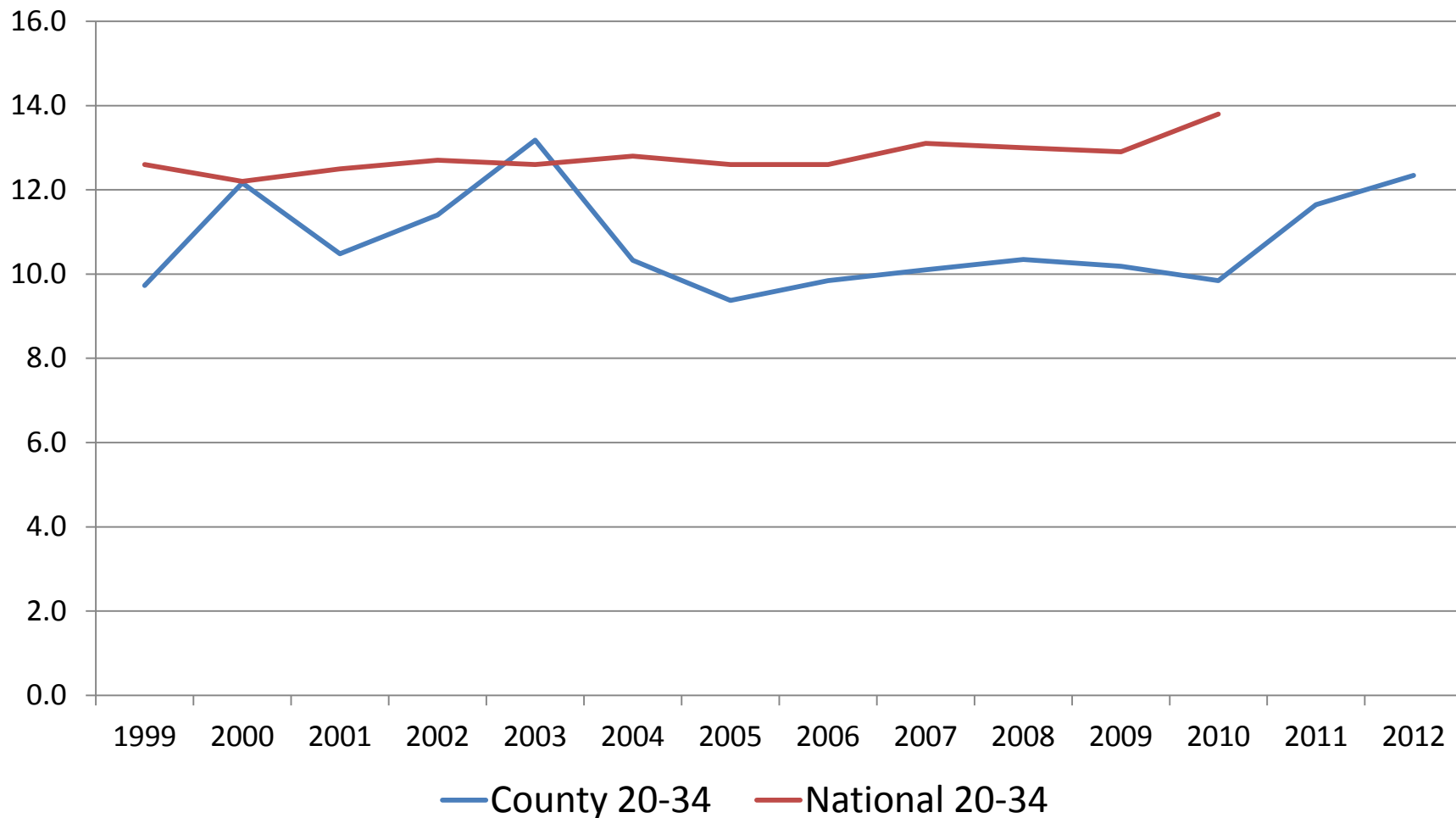


Rates per 100,000 people

Sources: County of San Diego, Health and Human Services Agency, Emergency Medical Services, Medical Examiner Database, 2000 – 2012. Centers for Disease Control and Prevention, National Center for Health Statistics. Compressed Mortality File 1999-2010. CDC WONDER On-line Database. U.S. Census Bureau, 2007-2011 American Community Survey.



20 – 34 Years

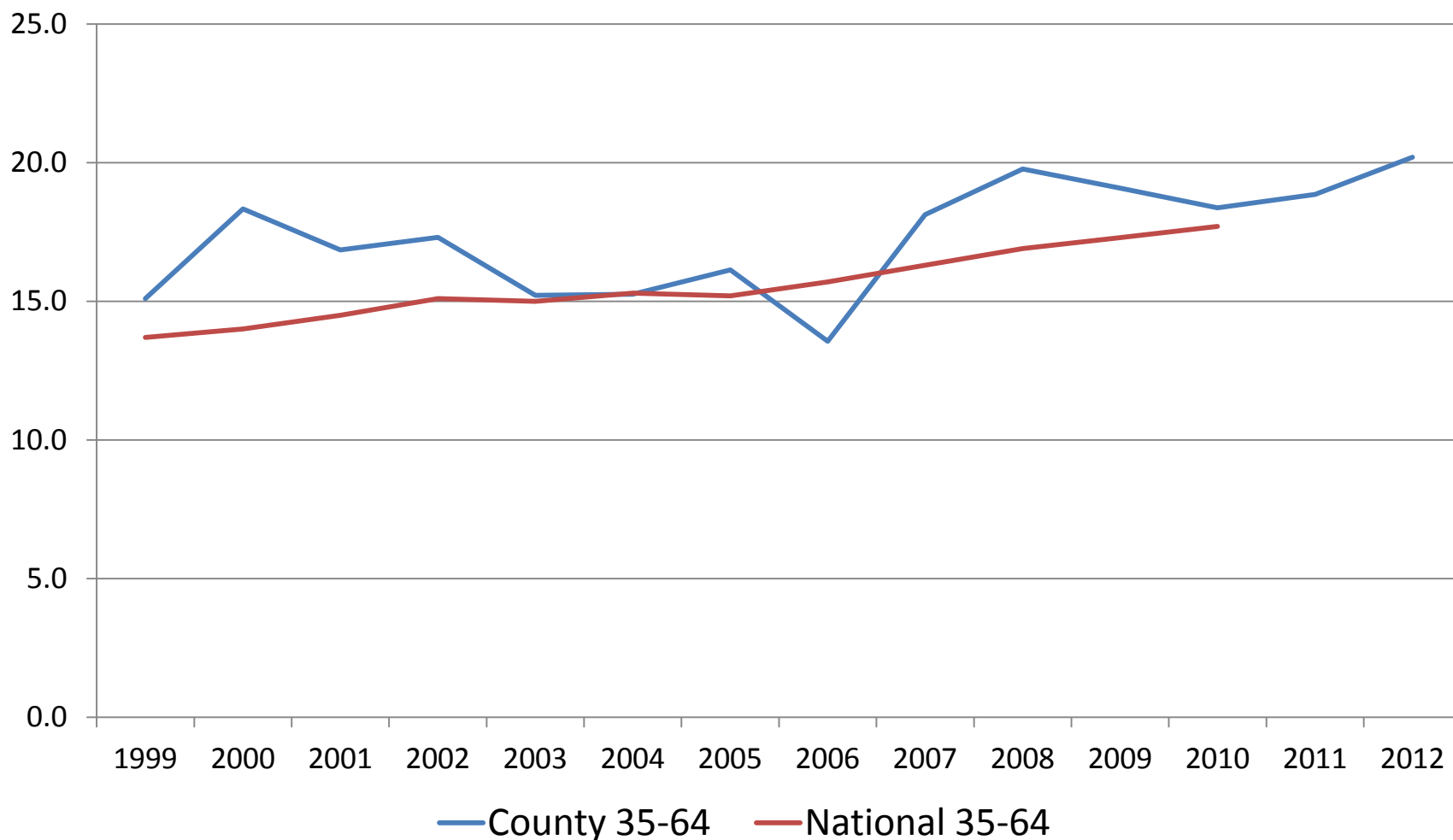


Rates per 100,000 people

Sources: County of San Diego, Health and Human Services Agency, Emergency Medical Services, Medical Examiner Database, 2000 – 2012. Centers for Disease Control and Prevention, National Center for Health Statistics. Compressed Mortality File 1999-2010. CDC WONDER On-line Database. U.S. Census Bureau, 2007-2011 American Community Survey.



35 – 64 Years

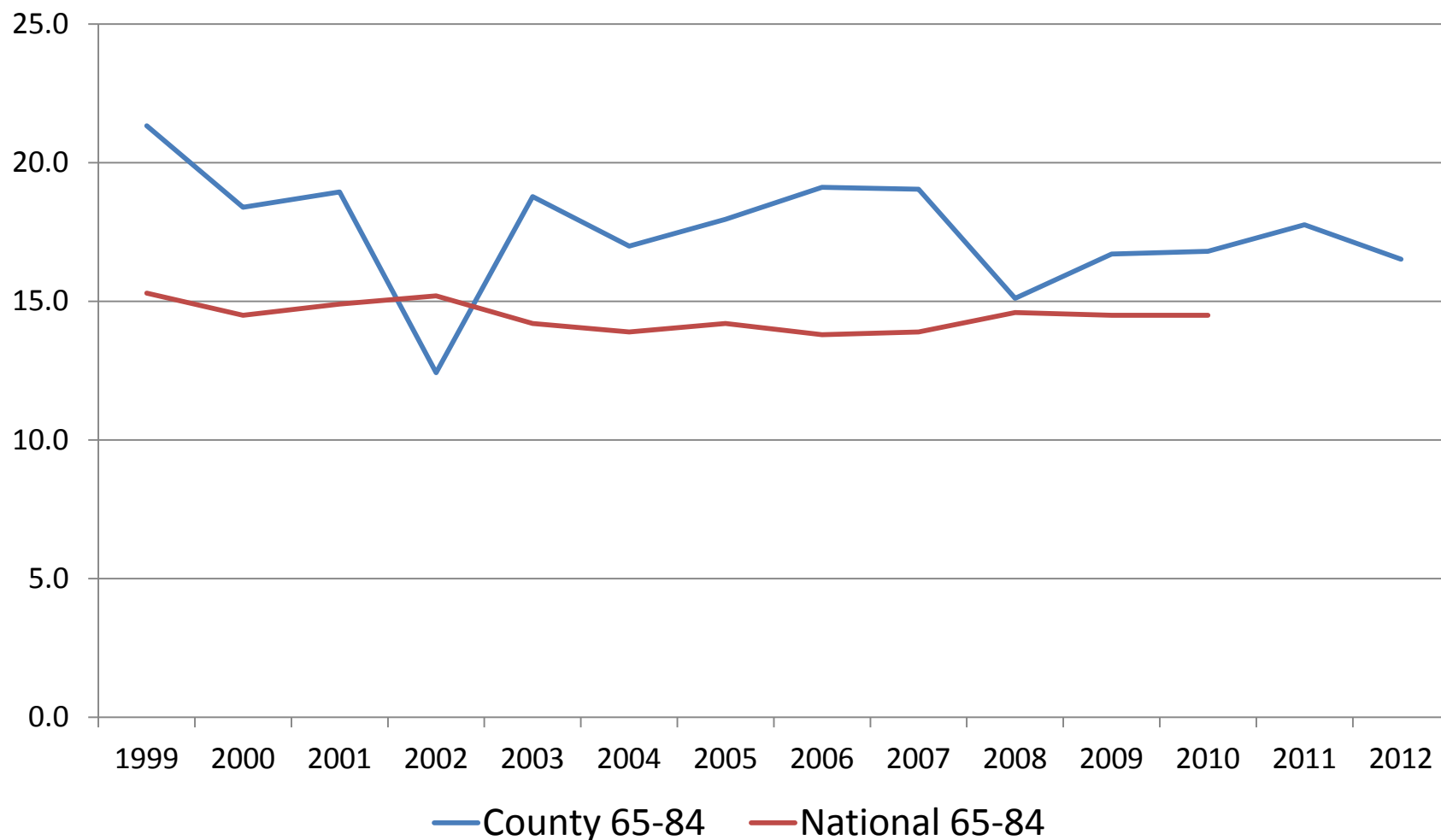


Rates per 100,000 people

Sources: County of San Diego, Health and Human Services Agency, Emergency Medical Services, Medical Examiner Database, 2000 – 2012. Centers for Disease Control and Prevention, National Center for Health Statistics. Compressed Mortality File 1999-2010. CDC WONDER On-line Database. U.S. Census Bureau, 2007-2011 American Community Survey.



65 – 84 Years

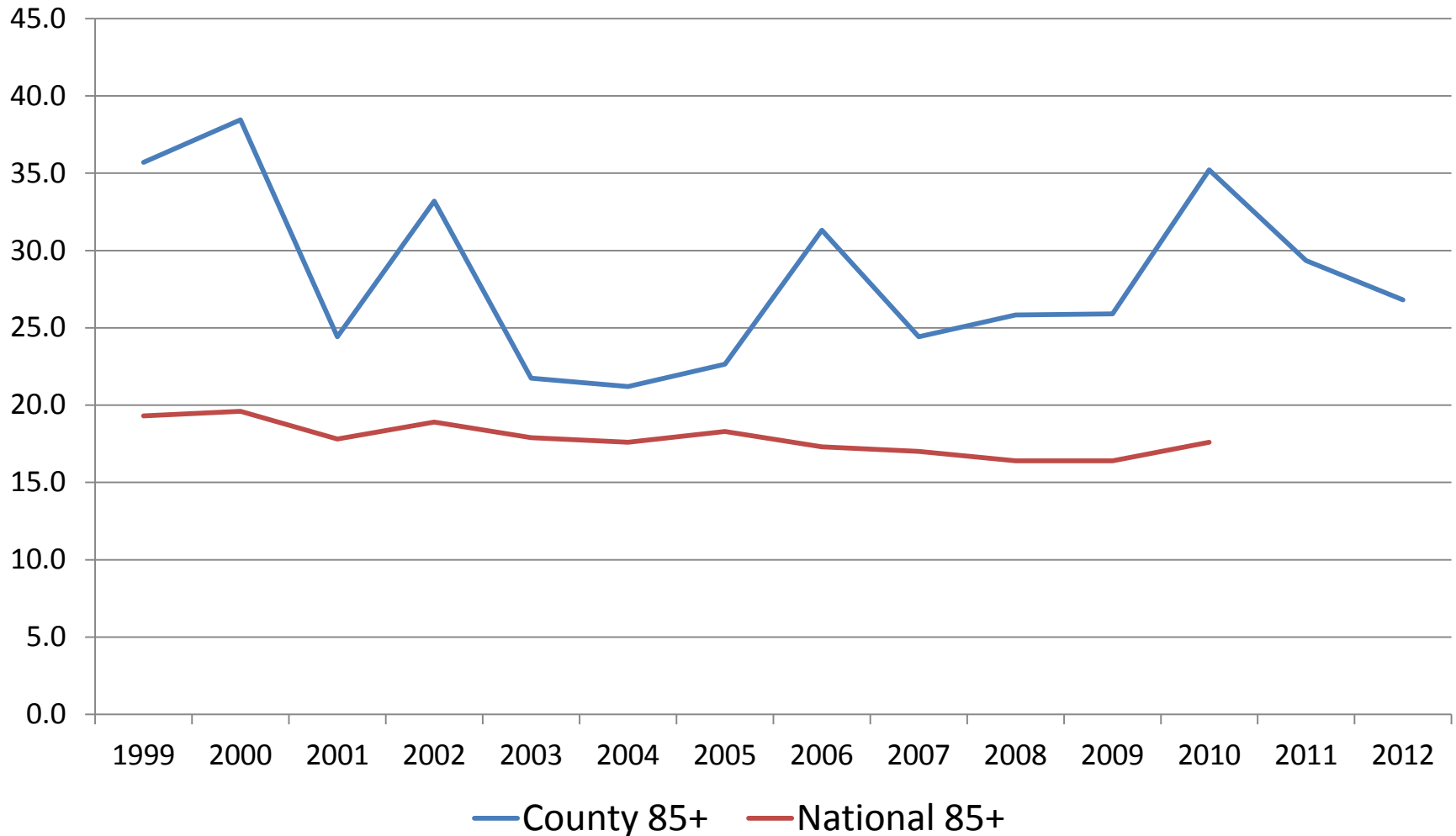


Rates per 100,000 people

Sources: County of San Diego, Health and Human Services Agency, Emergency Medical Services, Medical Examiner Database, 2000 – 2012. Centers for Disease Control and Prevention, National Center for Health Statistics. Compressed Mortality File 1999-2010. CDC WONDER On-line Database. U.S. Census Bureau, 2007-2011 American Community Survey.



85 + Years



Rates per 100,000 people

Sources: County of San Diego, Health and Human Services Agency, Emergency Medical Services, Medical Examiner Database, 2000 – 2012. Centers for Disease Control and Prevention, National Center for Health Statistics. Compressed Mortality File 1999-2010. CDC WONDER On-line Database. U.S. Census Bureau, 2007-2011 American Community Survey.



SAN DIEGO COUNTY VS CALIFORNIA STATE RATES

Sources: County of San Diego, Health and Human Services Agency, Emergency Medical Services, Medical Examiner Database, 2000 – 2012. Centers for Disease Control and Prevention, National Center for Health Statistics. Compressed Mortality File 1999-2010. CDC WONDER On-line Database. U.S. Census Bureau, 2007-2011 American Community Survey.



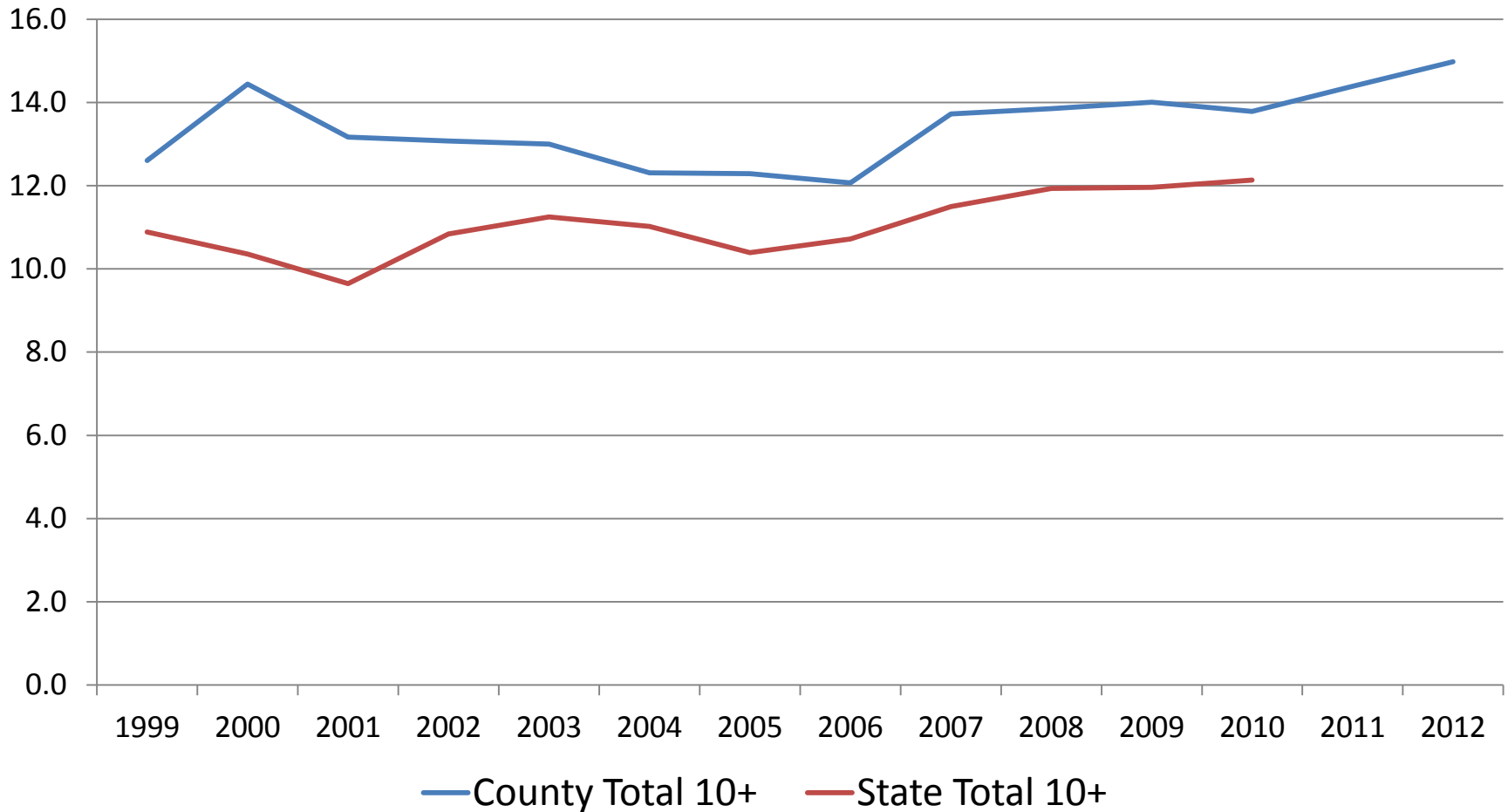
Comparison to California State Data

- 12 Years of CA State Data (1999-2010)
 - 40,500 Total Suicides
- 14 Years of SD County Data (1999-2012)
 - 4,829 Total Suicides

Sources: County of San Diego, Health and Human Services Agency, Emergency Medical Services, Medical Examiner Database, 2000 – 2012. Centers for Disease Control and Prevention, National Center for Health Statistics. Compressed Mortality File 1999-2010. CDC WONDER On-line Database. U.S. Census Bureau, 2007-2011 American Community Survey.



Total 10 + Years

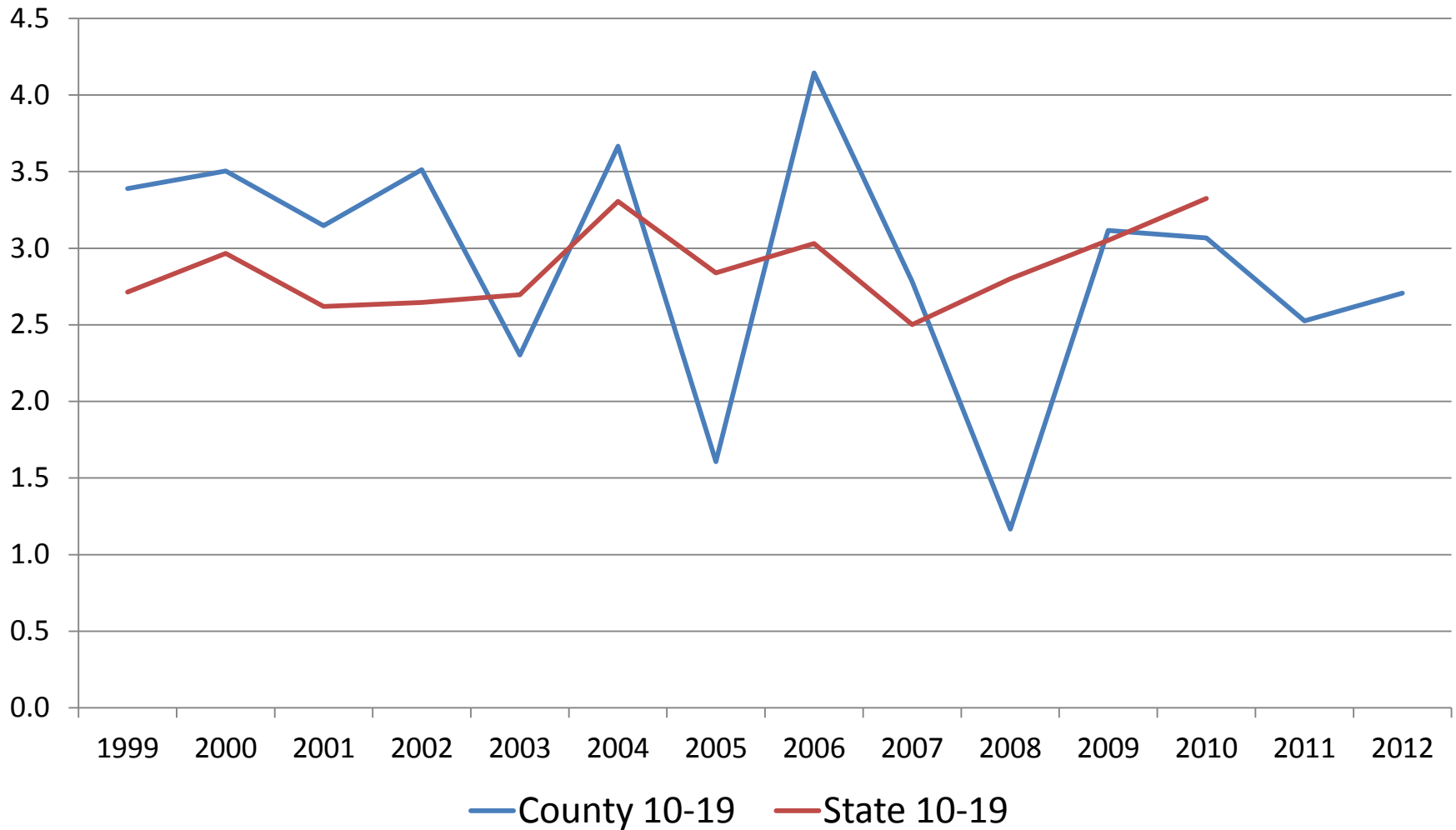


Rates per 100,000 people

Sources: County of San Diego, Health and Human Services Agency, Emergency Medical Services, Medical Examiner Database, 2000 – 2012. Centers for Disease Control and Prevention, National Center for Health Statistics. Compressed Mortality File 1999-2010. CDC WONDER On-line Database. U.S. Census Bureau, 2007-2011 American Community Survey.



10 – 19 Years

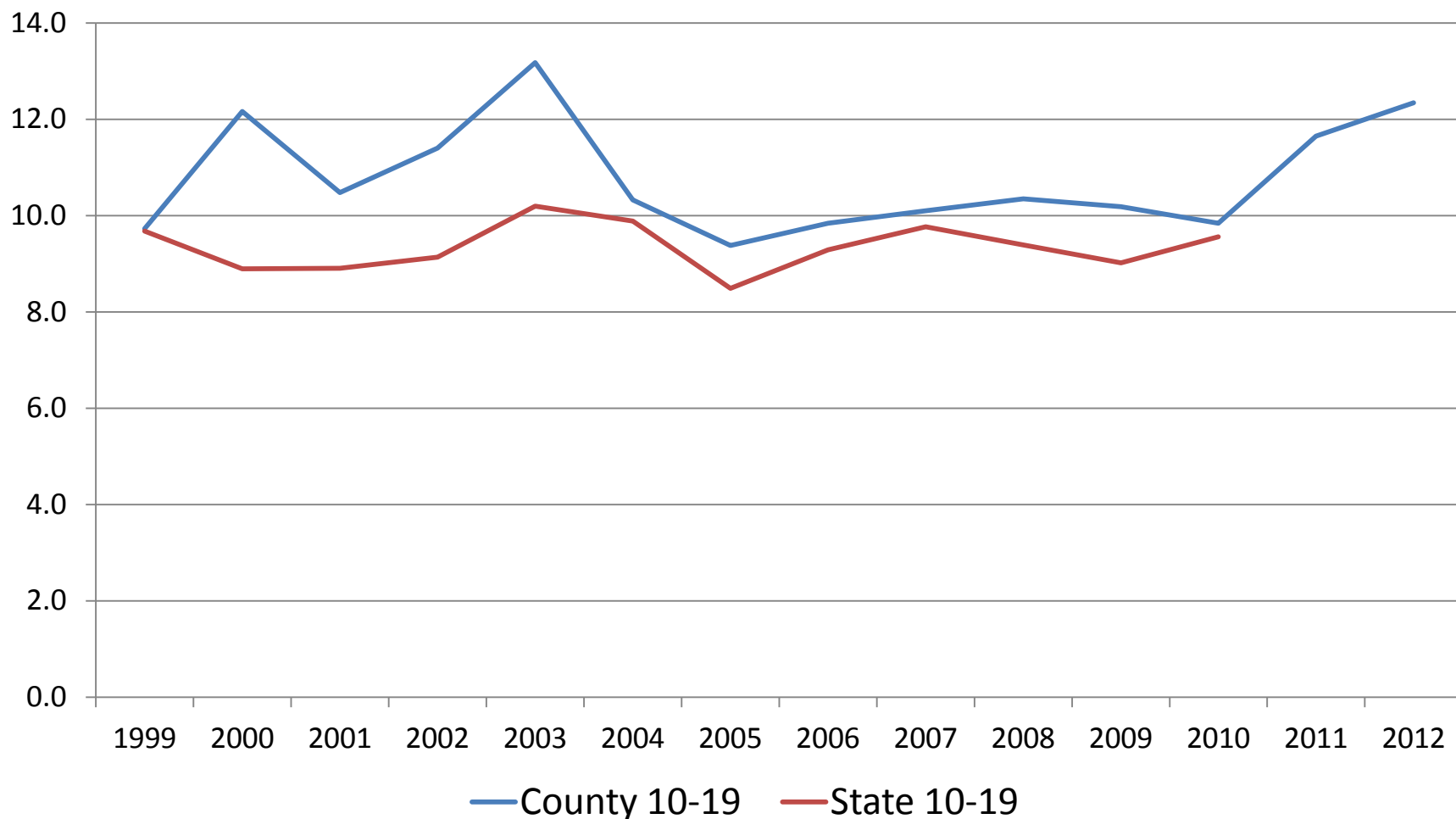


Rates per 100,000 people

Sources: County of San Diego, Health and Human Services Agency, Emergency Medical Services, Medical Examiner Database, 2000 – 2012. Centers for Disease Control and Prevention, National Center for Health Statistics. Compressed Mortality File 1999-2010. CDC WONDER On-line Database. U.S. Census Bureau, 2007-2011 American Community Survey.



20 – 34 Years

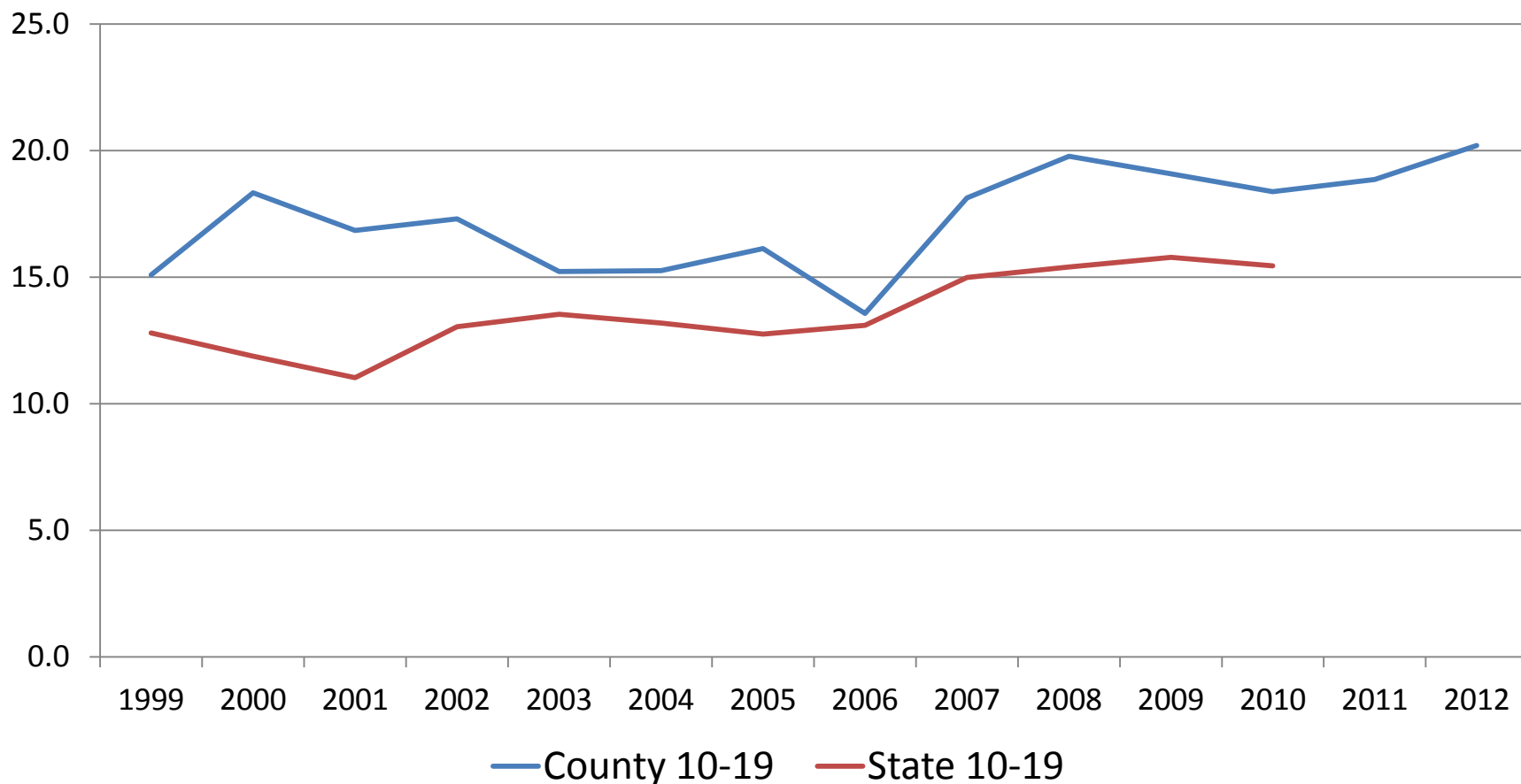


Sources: County of San Diego, Health and Human Services Agency, Emergency Medical Services, Medical Examiner Database, 2000 – 2012. Centers for Disease Control and Prevention, National Center for Health Statistics. Compressed Mortality File 1999-2010. CDC WONDER On-line Database. U.S. Census Bureau, 2007-2011 American Community Survey.

Rates per 100,000 people



35 – 64 Years

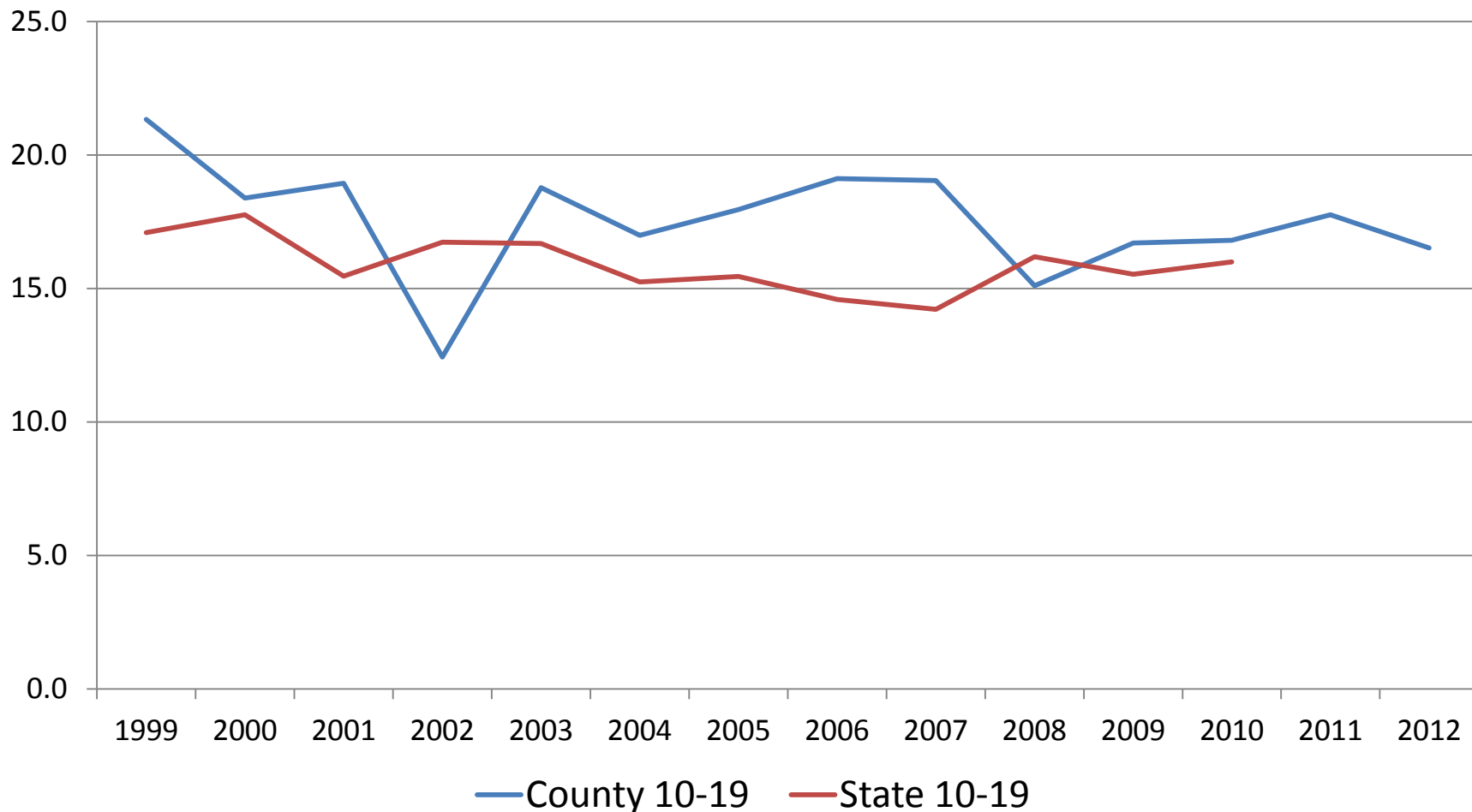


Sources: County of San Diego, Health and Human Services Agency, Emergency Medical Services, Medical Examiner Database, 2000 – 2012. Centers for Disease Control and Prevention, National Center for Health Statistics. Compressed Mortality File 1999-2010. CDC WONDER On-line Database. U.S. Census Bureau, 2007-2011 American Community Survey.

Rates per 100,000 people



65 – 84 Years

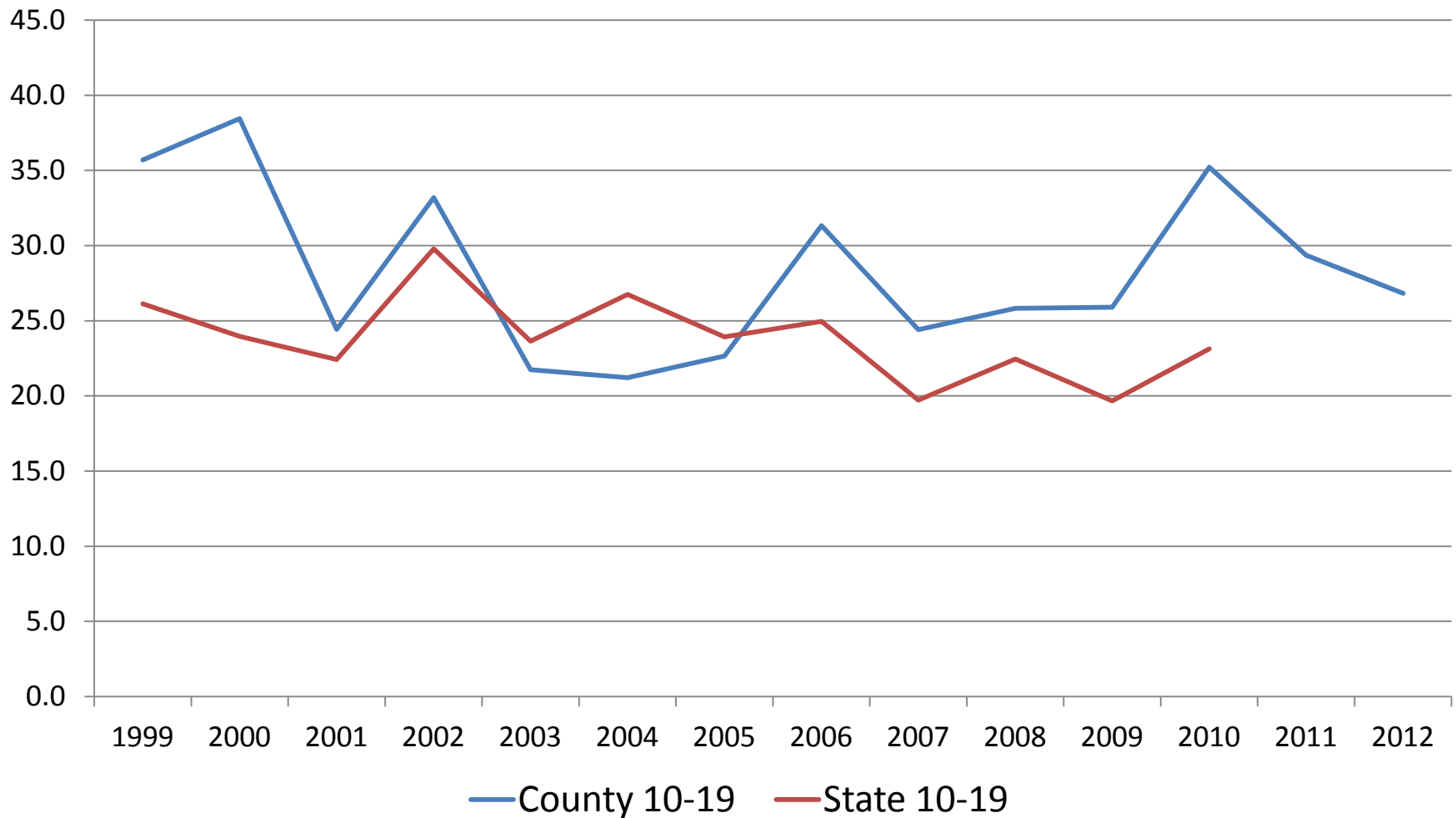


Rates per 100,000 people

Sources: County of San Diego, Health and Human Services Agency, Emergency Medical Services, Medical Examiner Database, 2000 – 2012. Centers for Disease Control and Prevention, National Center for Health Statistics. Compressed Mortality File 1999-2010. CDC WONDER On-line Database. U.S. Census Bureau, 2007-2011 American Community Survey.



85 + Years



Rates per 100,000 people

Sources: County of San Diego, Health and Human Services Agency, Emergency Medical Services, Medical Examiner Database, 2000 – 2012. Centers for Disease Control and Prevention, National Center for Health Statistics. Compressed Mortality File 1999-2010. CDC WONDER On-line Database. U.S. Census Bureau, 2007-2011 American Community Survey.



Summary

- 2012 most suicides in SD County history
- 2012 suicide rate is highest in 15 years
- The ratio of male to female suicides is 3:1
- The ratio of suicides to homicides is ~4:1
- The suicide rate among white San Diegans is more than double that of other race/ethnicities
- Suicide rates have increased 15% last decade
(24% among 85+ years)

Sources: County of San Diego, Health and Human Services Agency, Emergency Medical Services, Medical Examiner Database, 2000 – 2012. Centers for Disease Control and Prevention, National Center for Health Statistics. Compressed Mortality File 1999-2010. CDC WONDER On-line Database. U.S. Census Bureau, 2007-2011 American Community Survey.



Summary

- Being married has an extreme protective effect for suicide risk which is highest among those 35 – 64 years old
- Local suicide rates are lower than national rates for younger age groups but higher among older age groups
- SD County suicide rates are generally higher than California State rates

Contact

Joshua Smith
619-285-6528

Joshua.Smith@sdcounty.ca.gov

